

# **Enhancing Pedestrian Safety in the Alamo Area**



**Texas Pedestrian Safety Forum, June 17<sup>th</sup>**

# Vision Zero



## TRADITIONAL APPROACH

Traffic deaths are **INEVITABLE**

**PERFECT** human behaviour

Prevent **COLLISIONS**

**INDIVIDUAL** responsibility

Saving lives is **EXPENSIVE**

VS

## VISION ZERO

Traffic deaths are **PREVENTABLE**

Integrate **HUMAN FAILING** in approach

Prevent **FATAL AND SEVERE CRASHES**

**SYSTEMS** approach

Saving lives is **NOT EXPENSIVE**



IN

WITH  
THE

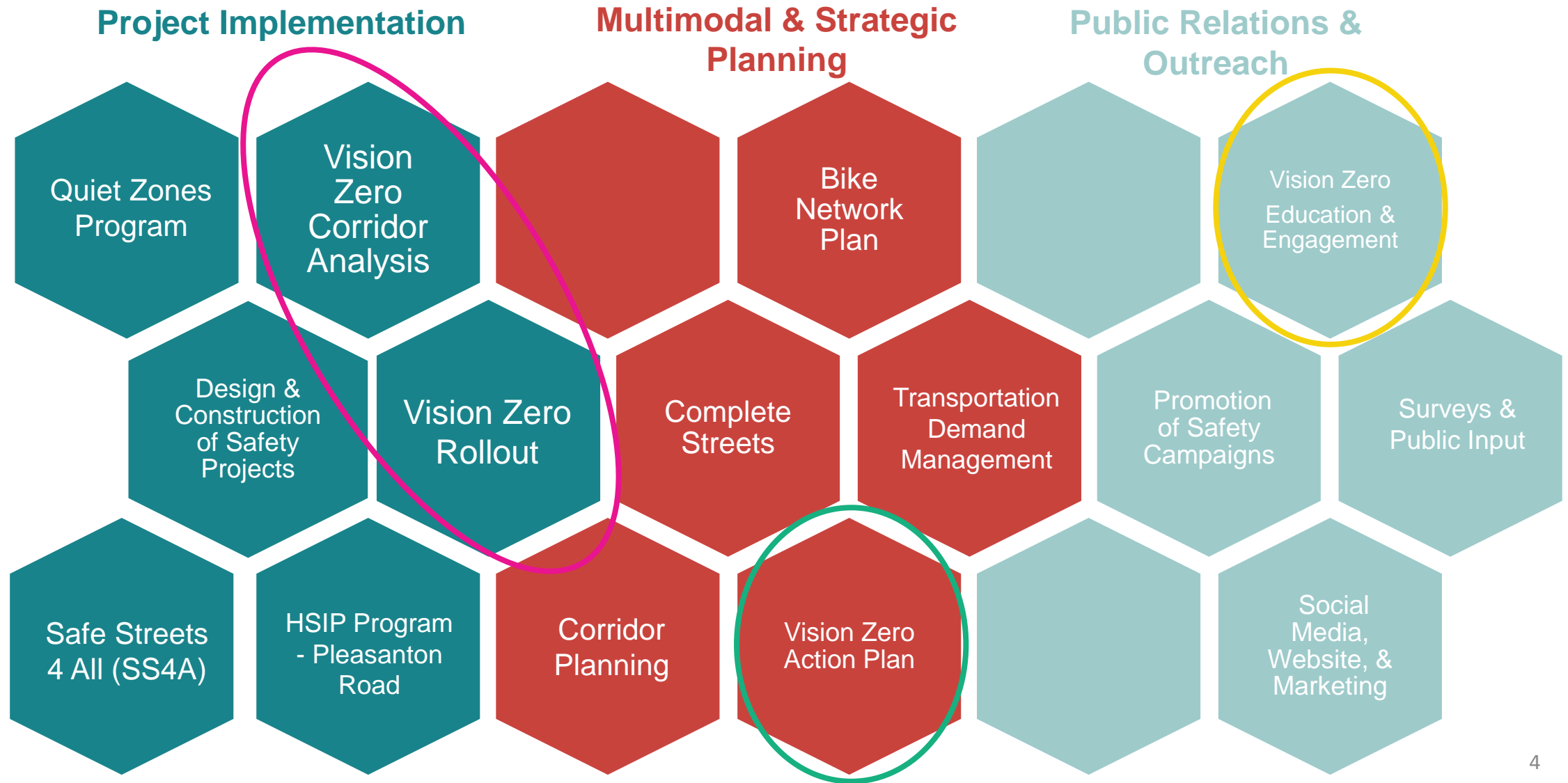
NEW

# Department Origins

Transportation and Capital Improvements was split into two new departments in 2020:

- Public Works
  - Maintenance
  - Bond projects
- Transportation
  - Planning & Analysis
  - Multimodal Transportation
  - **Vision Zero**

# Transportation Divisions







# Project Implementation

Building what we Plan

# Who builds the road network?

---

- Roads including sidewalks, bike facilities and accessibility
  - City
  - County
  - Development
- Department Coordination
  - Public Works Department
    - Bond implementation and maintenance
  - Development Services
    - New development
  - Parks Department
    - Trail network
- Entity Coordination
  - Texas Department of Transportation
  - VIA



# Who pays for it?

## City Funding

- General Fund
- Voter Approved Bond Projects

## Texas Department of Transportation

- Federal funding administered through the state and Alamo Area Metropolitan Organization (AAMPO)

## Federal Funding

- Federal Highway Administration (FHWA)
  - SS4A
  - CMAQ – Congestion Mitigation & Air Quality

## Other Funding

- County
- Developer Contributions
- Public/Private Partnerships

# Safety Countermeasures



1. UTSA Raised Crosswalk San Antonio, TX



2. Hawthorne Boulevard Pedestrian Safety Signs/Signals – Hawthorne, CA



3. <https://wcblind.org/2021/07/advocating-within-your-own-community/>



4. Washington Boulevard Dedicated Bus/Bike Lanes – Culver City, CA



5. [https://safety.fhwa.dot.gov/provencountermeasures/ped\\_medians.cfm](https://safety.fhwa.dot.gov/provencountermeasures/ped_medians.cfm); Charlotte, N.C. Median with pedestrian refuge.



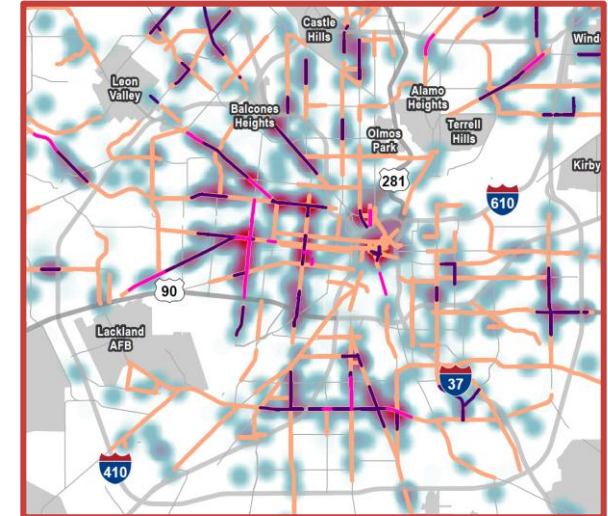
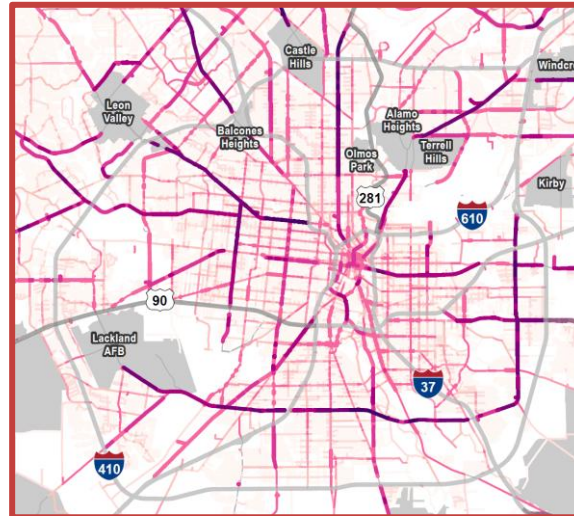
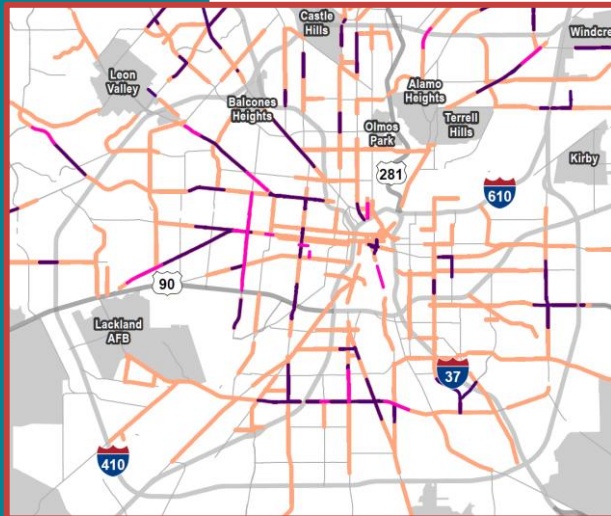
6. <https://designline.com/protected-bikeway-pedestrian-products/railscreen/>

1. Raised Crosswalk
2. Safety Signage
3. Leading Ped Signals/  
Rapid flashing
4. Dedicated bike/bus lanes
5. Median w/ ped refuge
6. Protected bike lanes

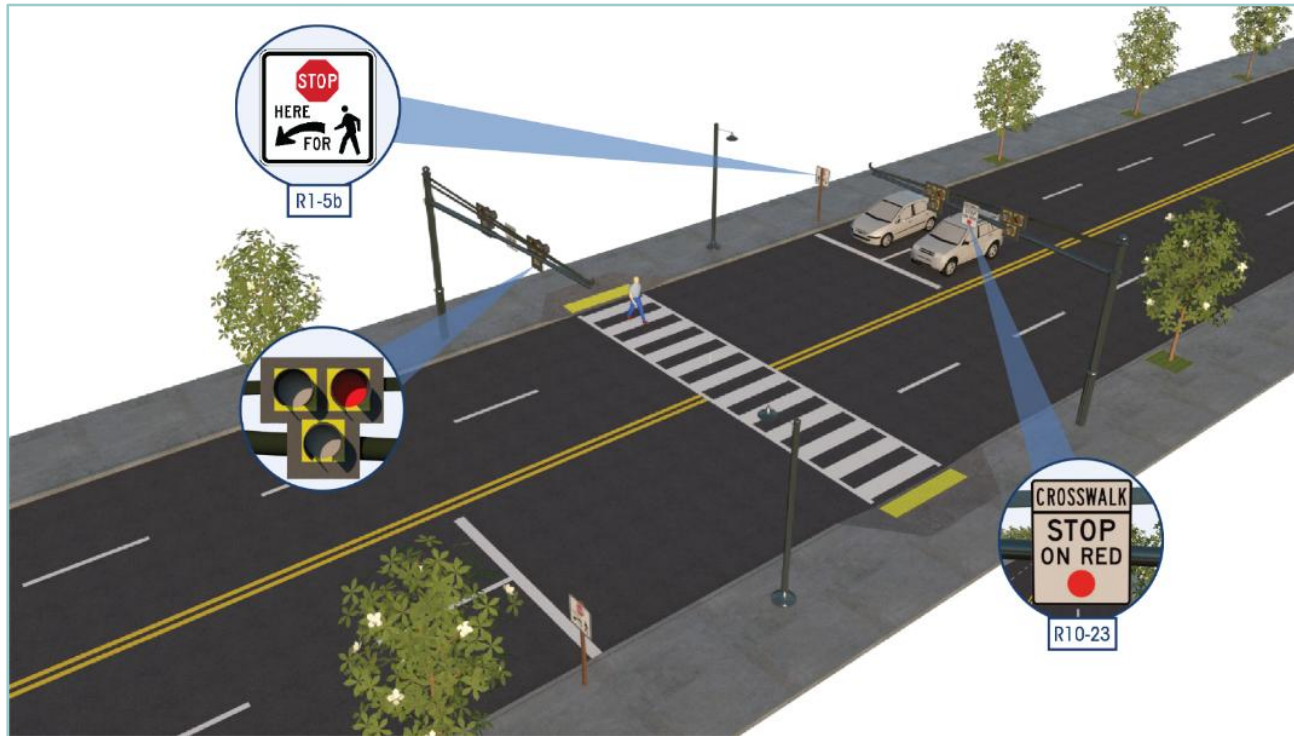


# Vision Zero - High Injury Network

- Analyze Corridors
  - High Injury Network
    - Crashes between 2018-2023
    - Fatalities & Severe Injuries Weighted



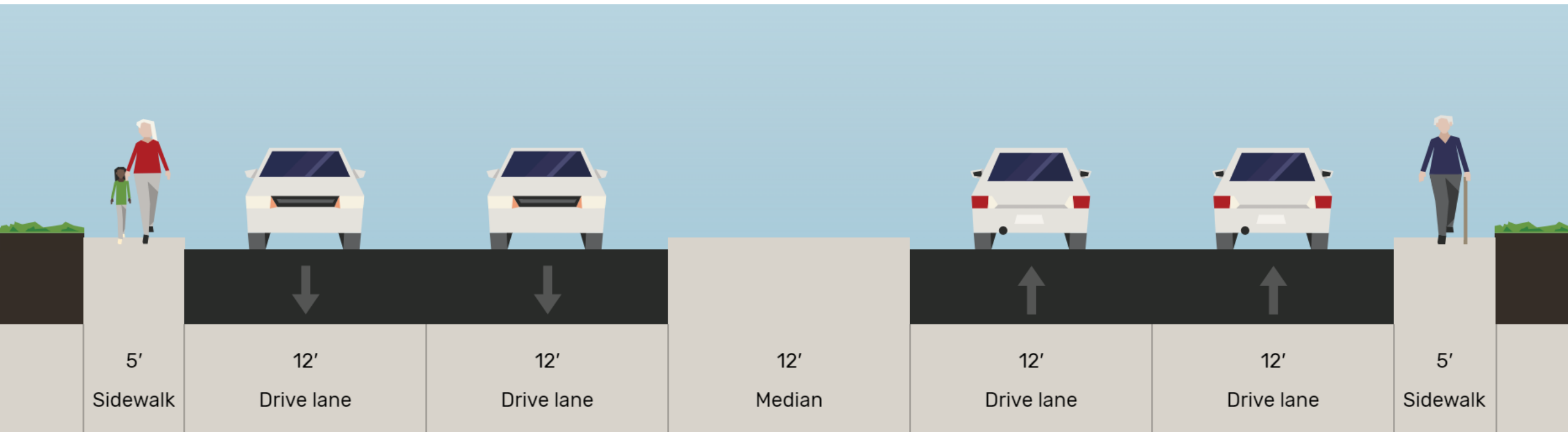
# Safety Projects



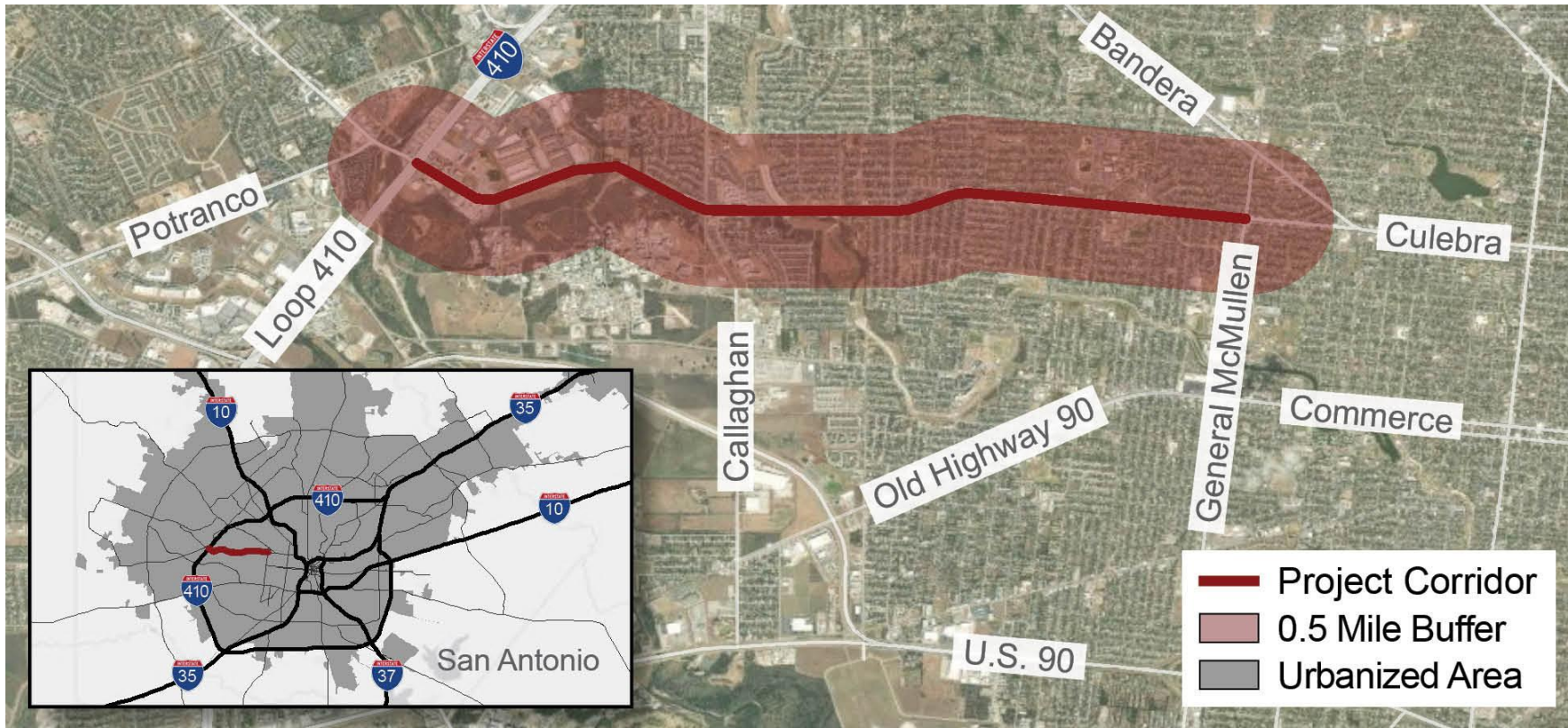
- Mid-block Crosswalks with PHB or Warning Beacons
  - Wurzbach @ Dean Panill
  - WW White @ Boxwood
  - Blanco Rd near West
- Signal Upgrade
  - WW White @ Rice Rd
- New Signals
  - Perrin Beitel @ Sungate
  - Culebra Rd @ Van Ness
- Raised Medians
  - Blanco Rd near West
- Corridor improvements
  - Oak Hill Rd – All way stop, signage, striping and vegetation

# Pleasanton Road Safety Improvements

- Raised concrete median with openings to turn left at signalized and some unsignalized locations
- 4 Mid-block crossings controlled by a Pedestrian Hybrid Beacon
- One traffic signal locating at Pleasanton Rd. and Rayburn Dr.
- Total project cost: \$3.6 million
- Funding: City/TxDOT Highway Safety Improvement Program







## Culebra Road RAISE Grant Submission

- February 2023
- 5-Mile Segment from General McMullen to Loop 410
- \$8 M Grant Request
- \$3 M Local Match
- \$11 M Total Funding for Schematic Design and Environmental Permitting



# Culebra Road Phase 1

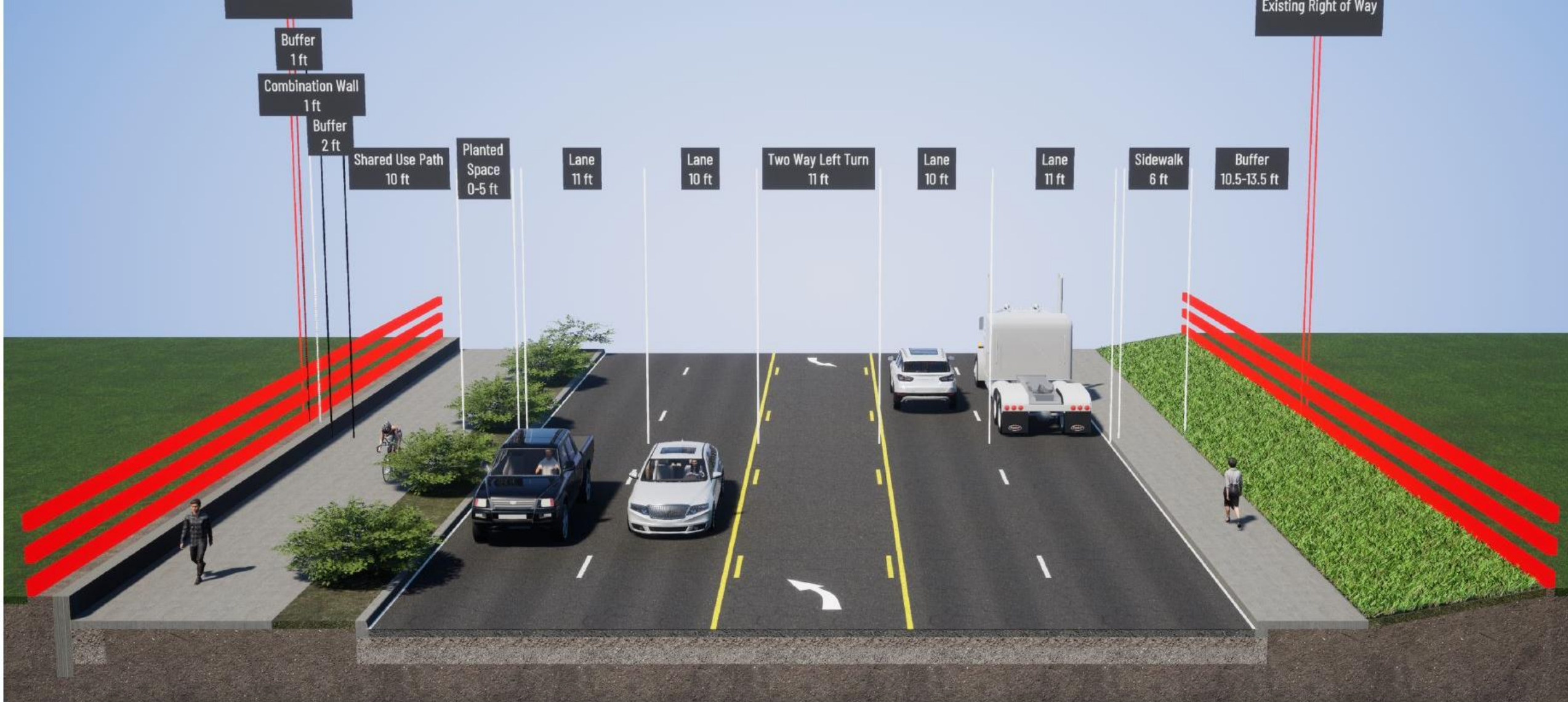
## Project Purpose and Need

- Existing Conditions

- High crash history rate
- Sidewalks in poor condition
- Poor accessibility and safety for pedestrians and cyclists
- Deteriorated drainage system
- Outdated traffic signals and equipment







## Culebra Road Phase 1 Proposed Improvements



# City & County

When agencies collaborate . . .



# Arboretum SA Trails

- Collaborative investment in Pedestrian Greenways
  - 200-acre Arboretum with trails and native habitat
  - Connects to Howard W. Peak Greenway Trails



**\$7.3M from FY22 Budget**



**\$25M Bond investment for future trails**



# San Pedro Creek Culture Park

- Climate Resilient Pedestrian Corridor – enhancing walkability, resilience and downtown connectivity



**Funded planning, infrastructure support, flood control and artwork (with SARA)**



**Co-development & construction of walking paths, bridges, flood control & signage**







# **THANK YOU!**

Murray Myers, Administrator  
[Murray.Myers@SanAntonio.gov](mailto:Murray.Myers@SanAntonio.gov)

