

# BORDERLESS STUDIO

**A design and  
planning practice  
focused on spatial  
justice, equitable  
design and  
multidisciplinary  
collaboration**



Morningside Park (Detroit, IL)



Buena Vida (Brownsville, TX)



Public Art Reimagining Tour / P.A.R.T.Y. (Chicago, IL)





# Community Survey

Over 142 residents and community stakeholders completed a visioning survey designed to identify opportunities and challenges for California Avenue.

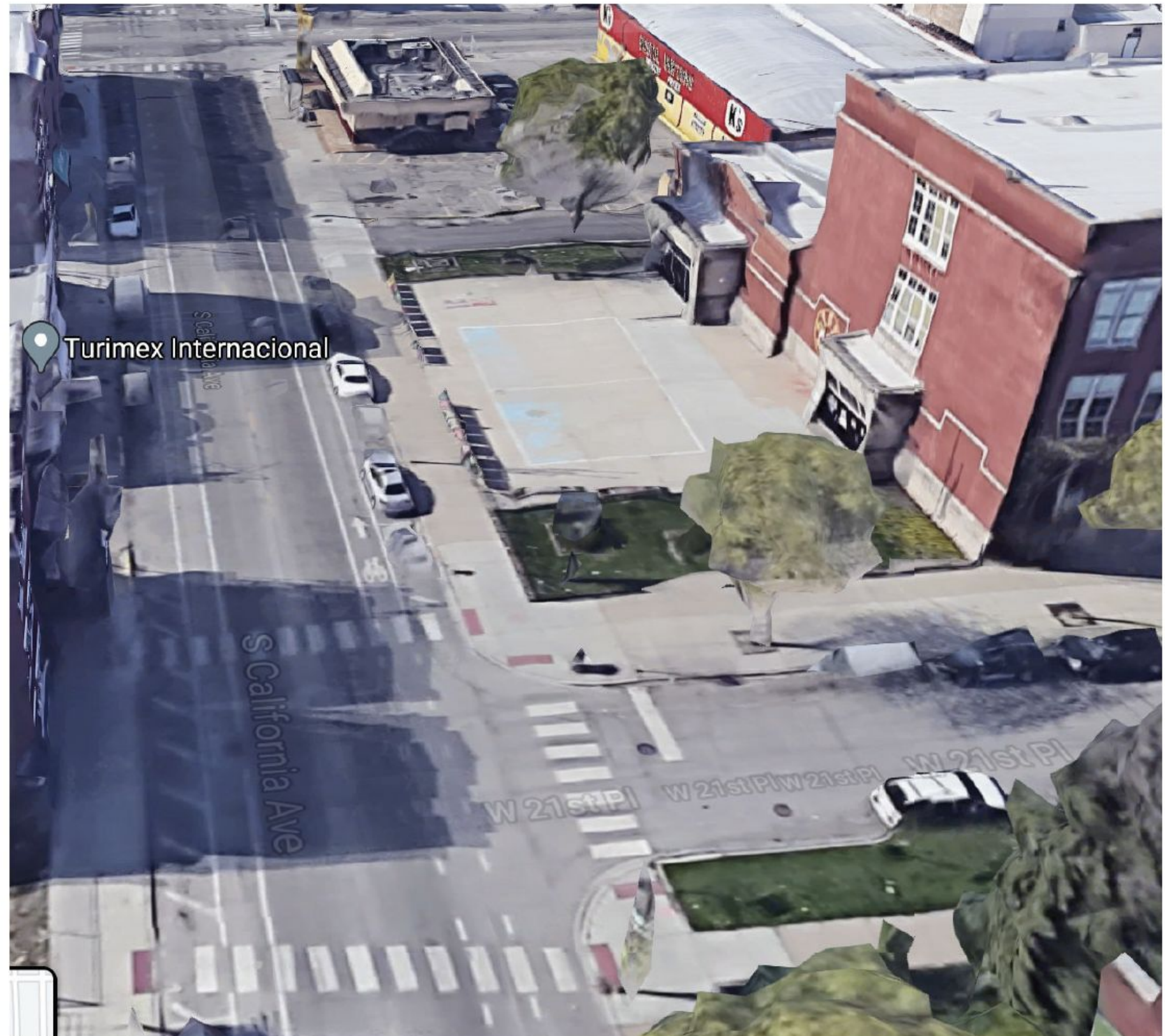




# California Avenue & 21st Place

## Current Conditions

California Avenue & 21st Place has been identified by community members as the highest priority for improvements that would help to establish a safer environment, especially for younger students and their families. This Focus Area includes Hammond Elementary, the Turimex bus station, and a blend of residential and commercial uses. Existing painted crosswalks are often ignored by local drivers.



# California Avenue & 21st Place





# California Avenue & 21st Place

Improvements to the California Avenue & 21st Place Focus Area are intended to calm traffic while creating a safer pedestrian crossing. The strategies include:



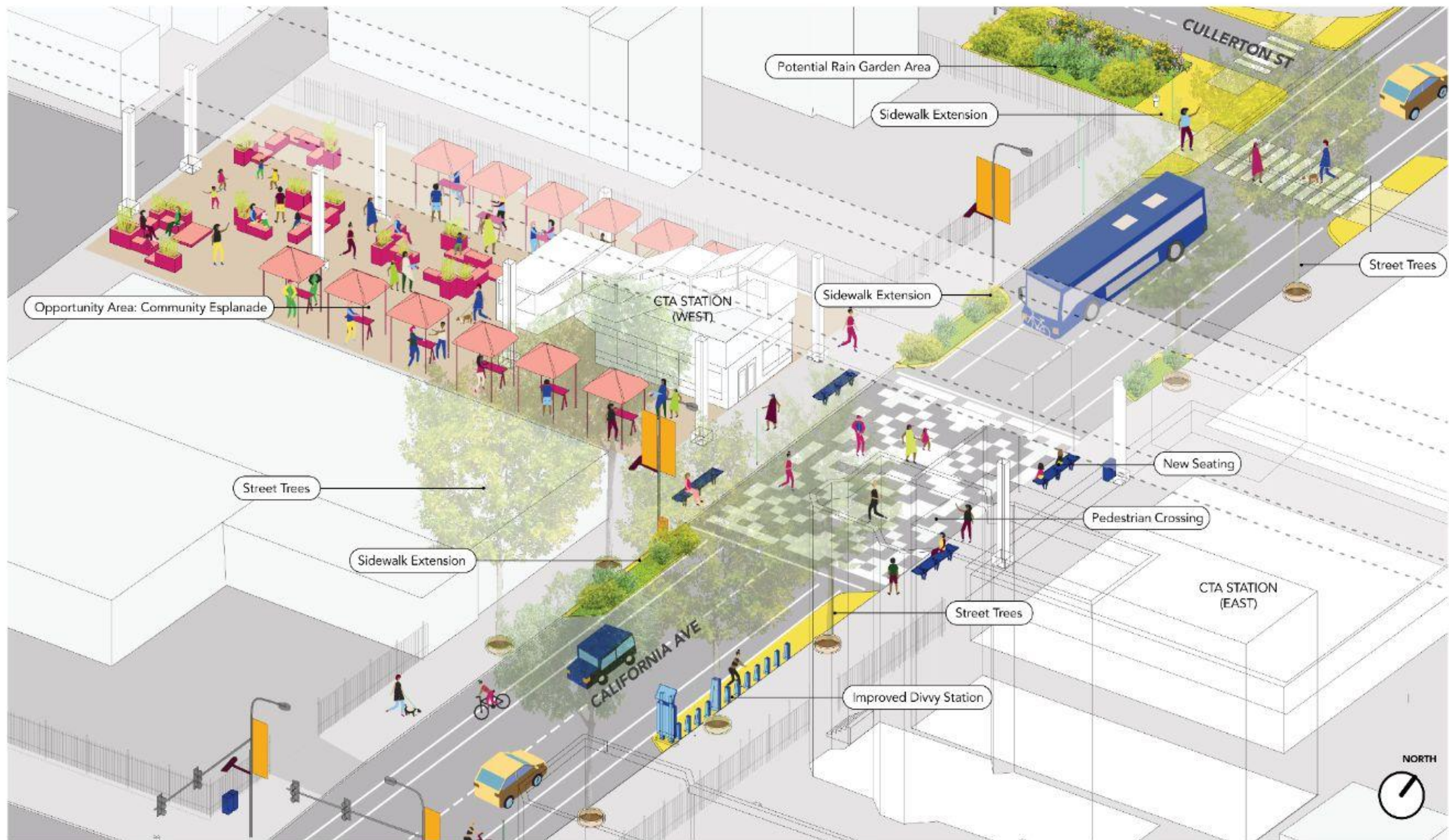
# California Avenue Pink Line Station

## Current Conditions

The California Avenue CTA Pink Line station was identified by survey respondents as the #1 asset in the community. Prior to COVID-19, the Pink Line station averaged 1,262 weekday boardings. The area around the CTA station holds tremendous potential as a gathering place for local residents. Currently, the only artwork in the station area is a mixed media mosaic entitled "Amor" by Christopher Tavares Silva. The Focus Area generally lacks seating, signage and landscape elements, creating a generic and utilitarian feel to the station environs.

## Vision







# California Avenue Pink Line Station

Improvements to the California Avenue Pink Line Station Focus Area are intended to calm traffic while creating a safer pedestrian crossing. The strategies include:

- ① New pedestrian crossing
- ② Improved bike lanes
- ③ New seating
- ④ Wayfinding and navigation signage
- ⑤ New street trees
- ⑥ Green infrastructure / Rain gardens
- ⑦ Public Art Opportunity Area



VISUALIZATION FOR ILLUSTRATIVE PURPOSES ONLY

# CITY OF CHICAGO ENGAGEMENT



JANUARY 2025



# Engagement Goals

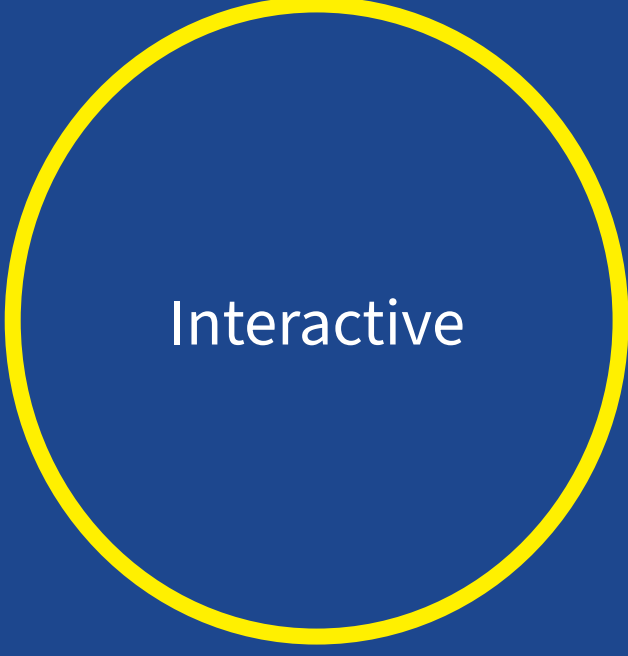
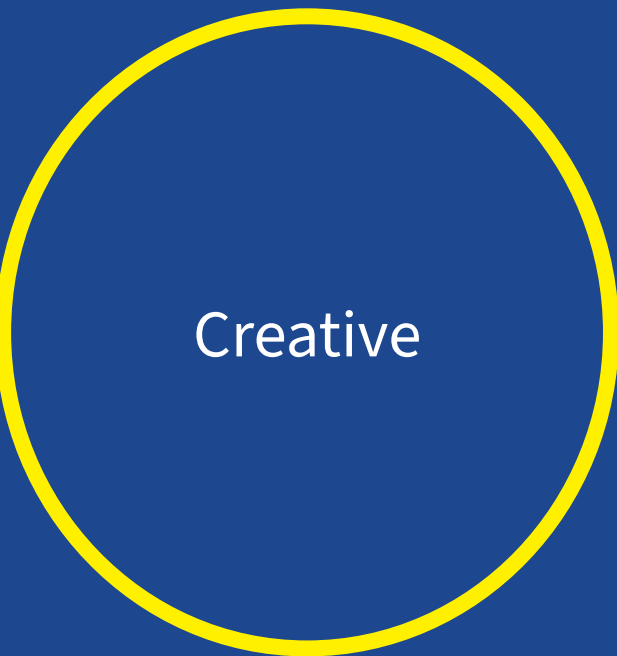
## Awareness: Travel Safety Concepts

What we would like everyone to know  
Education *Did you know...?*

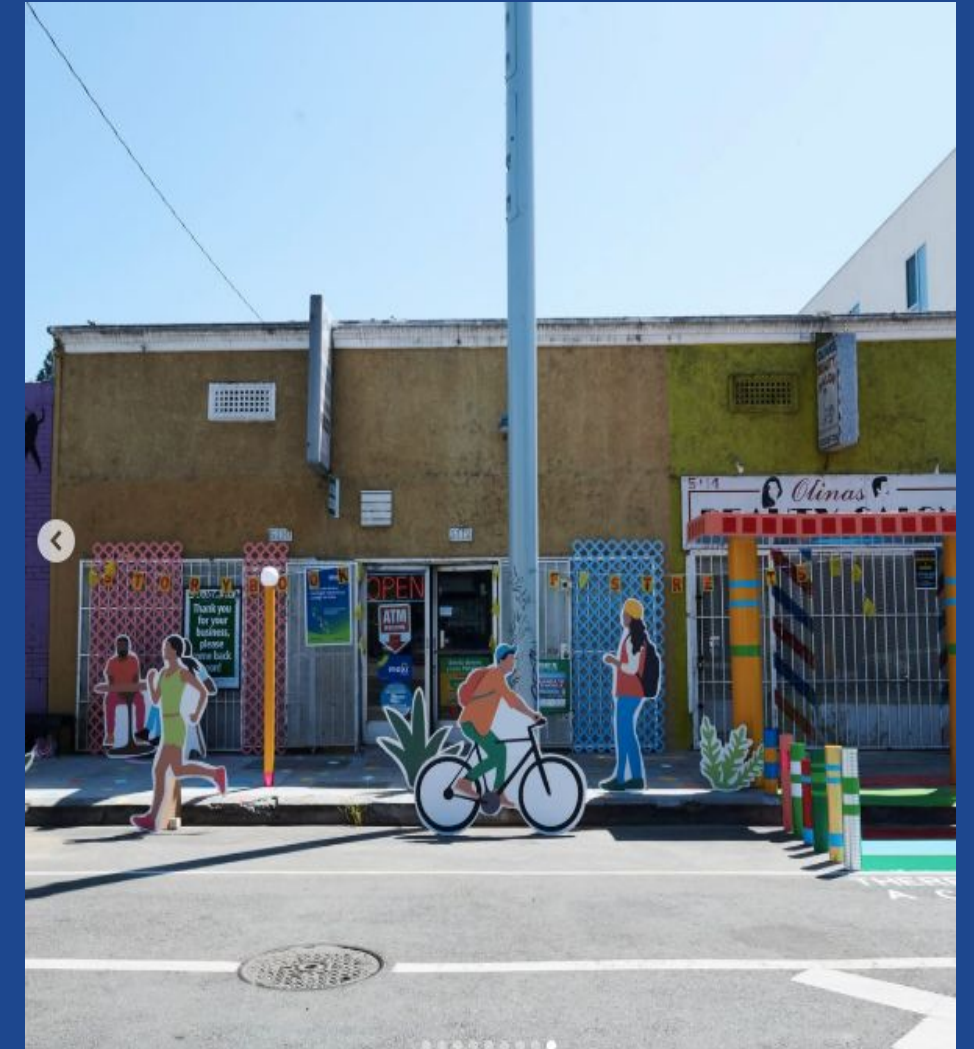
- What are **Safety Action Plans**?
- How transportation infrastructure **investment** decisions are made?
- What travel safety efforts, projects, initiatives are ongoing or planned



CASE STUDIES  
COMMUNITY ENGAGEMENT



# CASE STUDIES



Storybook of Streets, LA (Office of Office)

# CASE STUDIES

## COMMUNITY ENGAGEMENT



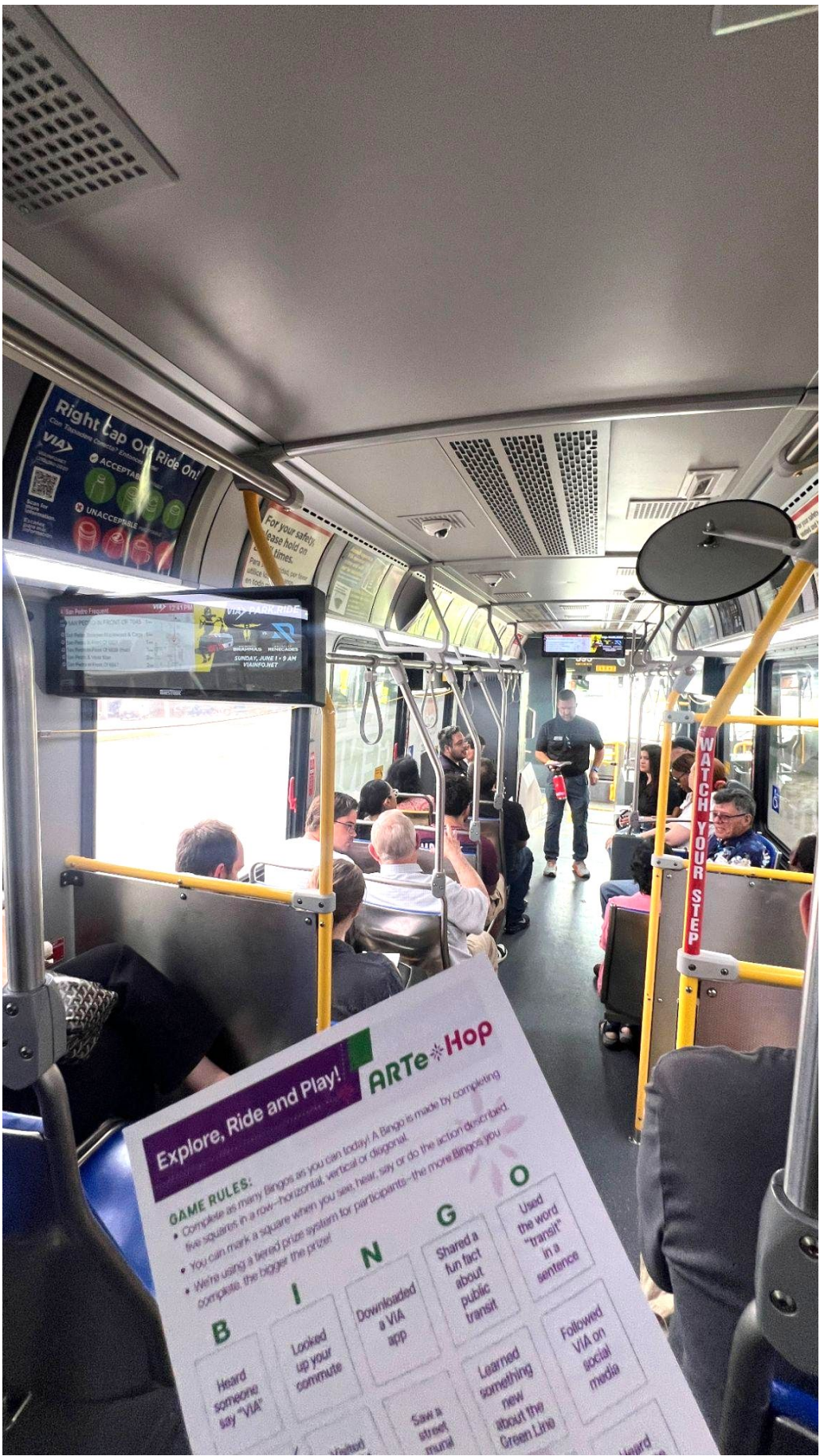
Streetmix > Edmonton 100 in Day

Ready to kick off the ARTe Hop!



Via Metropolitan Transit Via Metro Center Via Information Cent...

After some snacks...  
Hoping back on the bus!  
San Pedro Avenue



Explore, Ride and Play! ARTe Hop

GAME RULES:

- Complete as many Bingos as you can today! A Bingo is made by completing five squares in a row—horizontal, vertical or diagonal.
- You can mark a square when you see, hear, say or do the action described.
- We're using a tiered prize system for participants—the more Bingos you complete, the bigger the prize!

B	I	N	G	O
Heard someone say "VIA"	Looked up your commute	Downloaded a VIA app	Shared a fun fact about public transit	Used the word "transit" in a sentence
			Learned something new about the Green Line	Followed VIA on social media



Welcome To

ARTe Hop

VIA

KeepSAmoving.com

VIA

KeepSAmoving.com