



HARRIS COUNTY PRECINCT 4

**COMMISSIONER  
LESLEY BRIONES**

# **Increasing Pedestrian Safety and Connectivity between Urban and Suburban Communities**


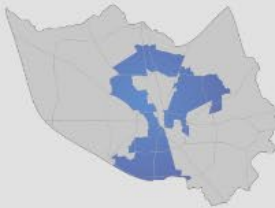
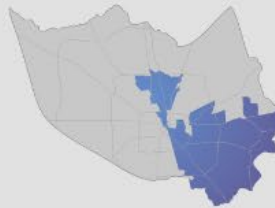
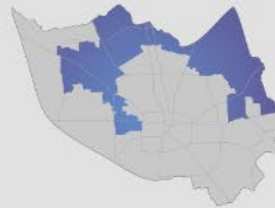







*Connecting places, people, and partners*

May 2, 2024

Texas Pedestrian Safety Forum

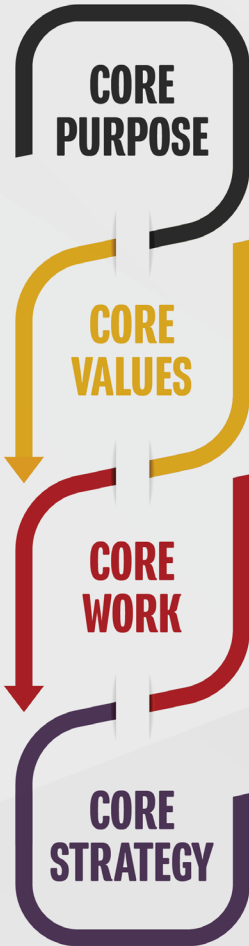
# About Harris County

## Commissioners Court

				
County Judge <b>Lina Hidalgo</b>	Precinct 1 Commissioner <b>Rodney Ellis</b>	Precinct 2 Commissioner <b>Adrian Garcia</b>	Precinct 3 Commissioner <b>Tom S. Ramsey, P.E.</b>	Precinct 4 Commissioner <b>Lesley Briones</b>
				
				



# MISSION & VISION



To advance opportunity and justice



HEART



HUSTLE



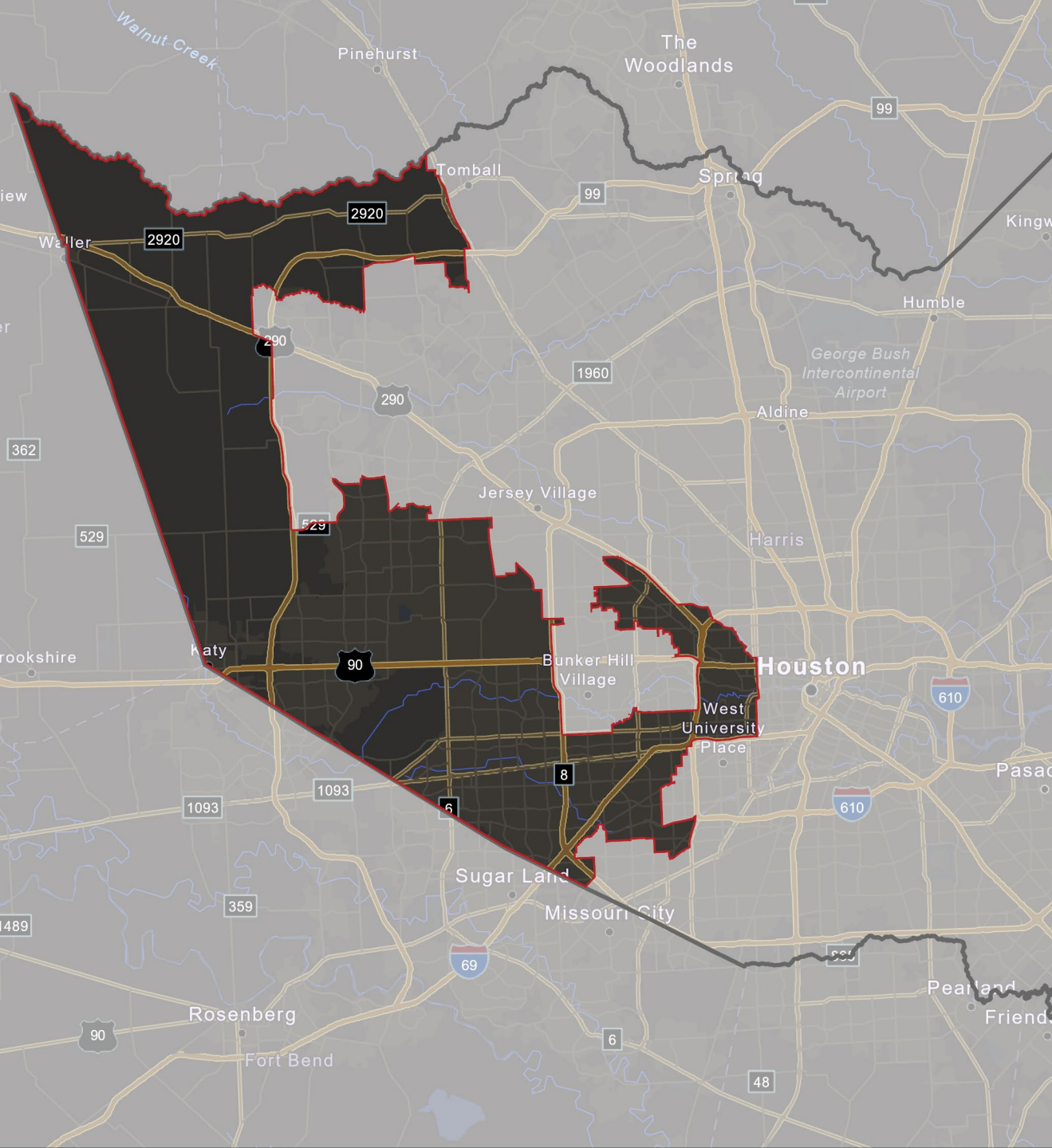
HIGHER  
STANDARDS

We deliver services to and advocate  
for all people in Harris County

Equitable  
Distribution of  
Resources

Empowering  
Communities

Effective  
& Efficient



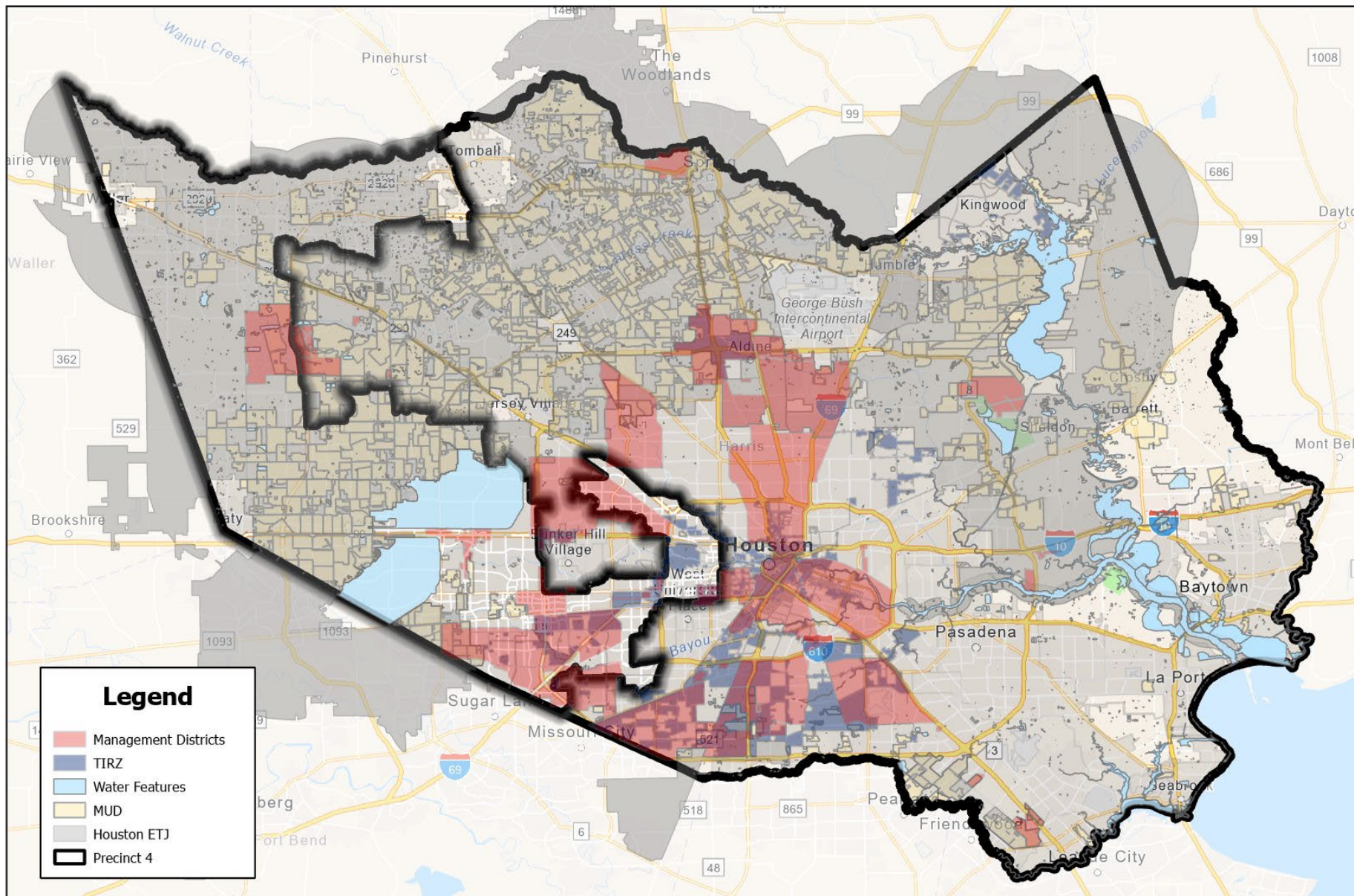
## About Precinct 4

- **1.2** million residents
- **5** cities
- **141** MUDs
- **17** Management Districts
- **6** TIRZs
- **3,000** miles of sidewalks
- **1,400** miles of streets
- **10** community centers
- **55** parks
- **~\$600 million** in infrastructure projects



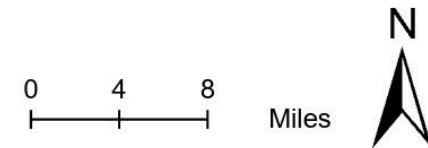
HARRIS COUNTY PRECINCT 4  
**COMMISSIONER  
LESLEY BRIONES**





HARRIS COUNTY PRECINCT 4  
**COMMISSIONER  
LESLEY BRIONES**

## Special Purpose Districts



# Improving pedestrian safety is about Connecting ...

**Places**

**People**

**Partners**



HARRIS COUNTY PRECINCT 4  
**COMMISSIONER  
LESLEY BRIONES**



# Infrastructure: Beyond the Basics



**Equity**



**Resilience**



**Sustainability**



**Community Support**



**Healthy Places & Buildings**

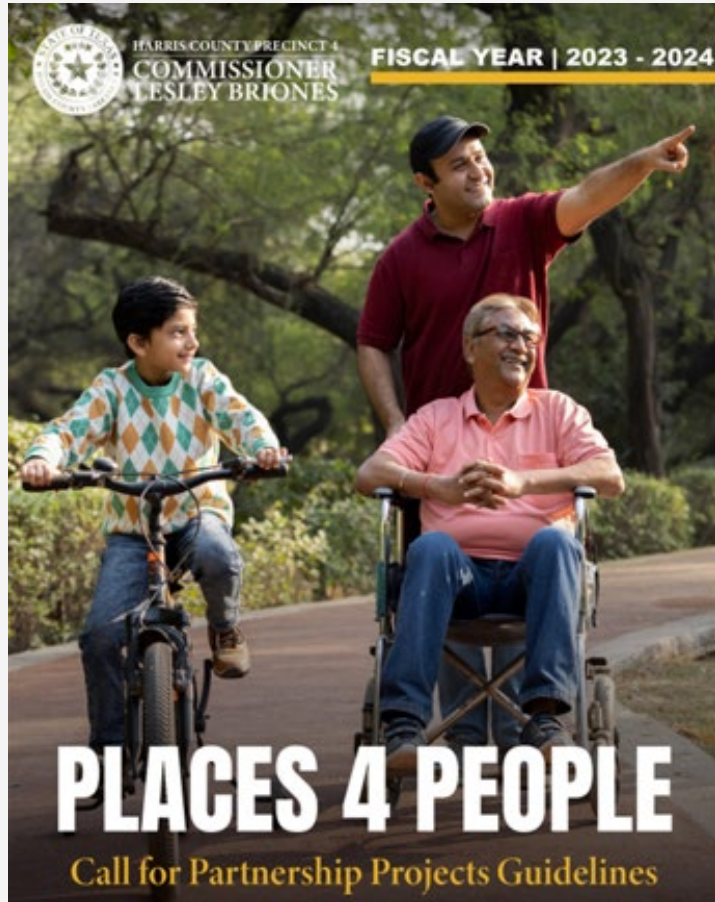


**Universal Design**



HARRIS COUNTY PRECINCT 4  
**COMMISSIONER**  
**LESLEY BRIONES**

# Overall Year One Results



## PLACES 4 PEOPLE

- **41** submissions
- **32** capital projects selected
- **20** partner organizations
- **\$170 Million** investment in sustainable infrastructure
- **\$88 Million** Precinct 4 funds
- **\$82 Million** Partnership contributions
- **26 of 32** projects in medium/high socioeconomically vulnerable areas



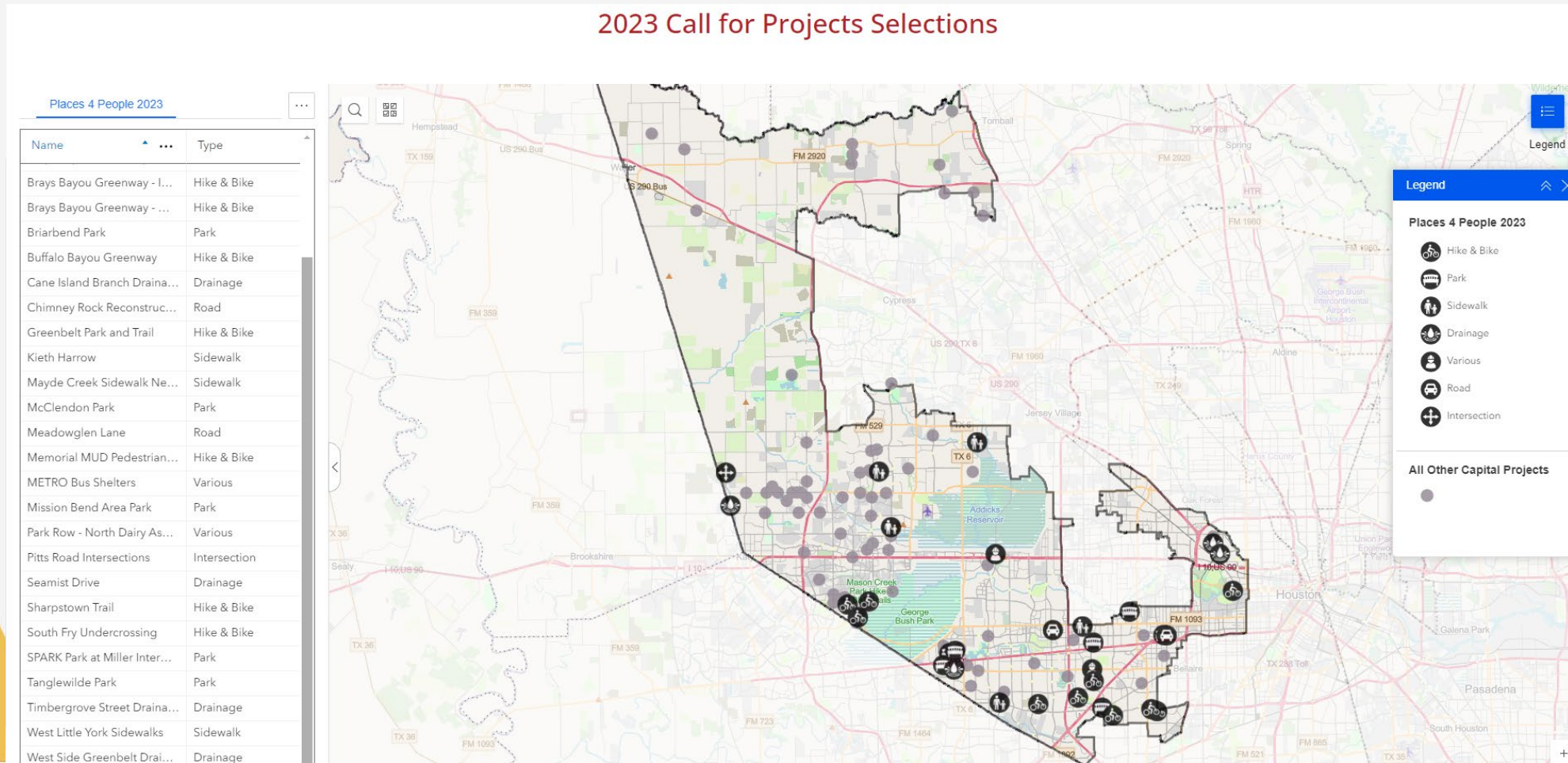
HARRIS COUNTY PRECINCT 4  
COMMISSIONER  
LESLEY BRIONES



# Overall Year One: Map



## 2023 Call for Projects Selections

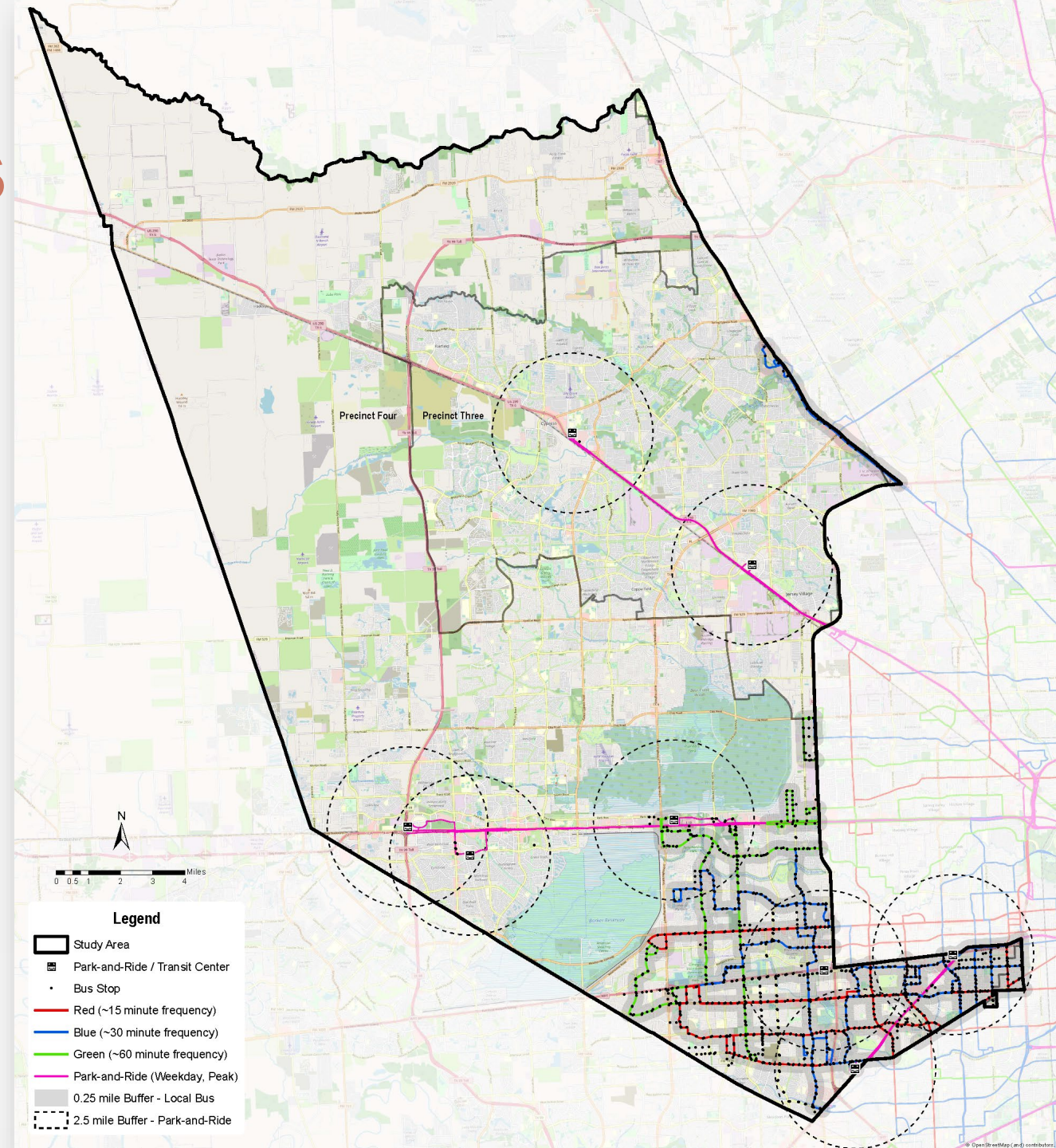




# Connecting Places

## West Harris County Transit Demand Study

- Listening Tour 2023 public input from communities on the lack of transit west of the reservoirs.
- Assessing public transit demand in Precinct 4 corridors.
- Identifying capital improvements to make infrastructure transit-supportive.

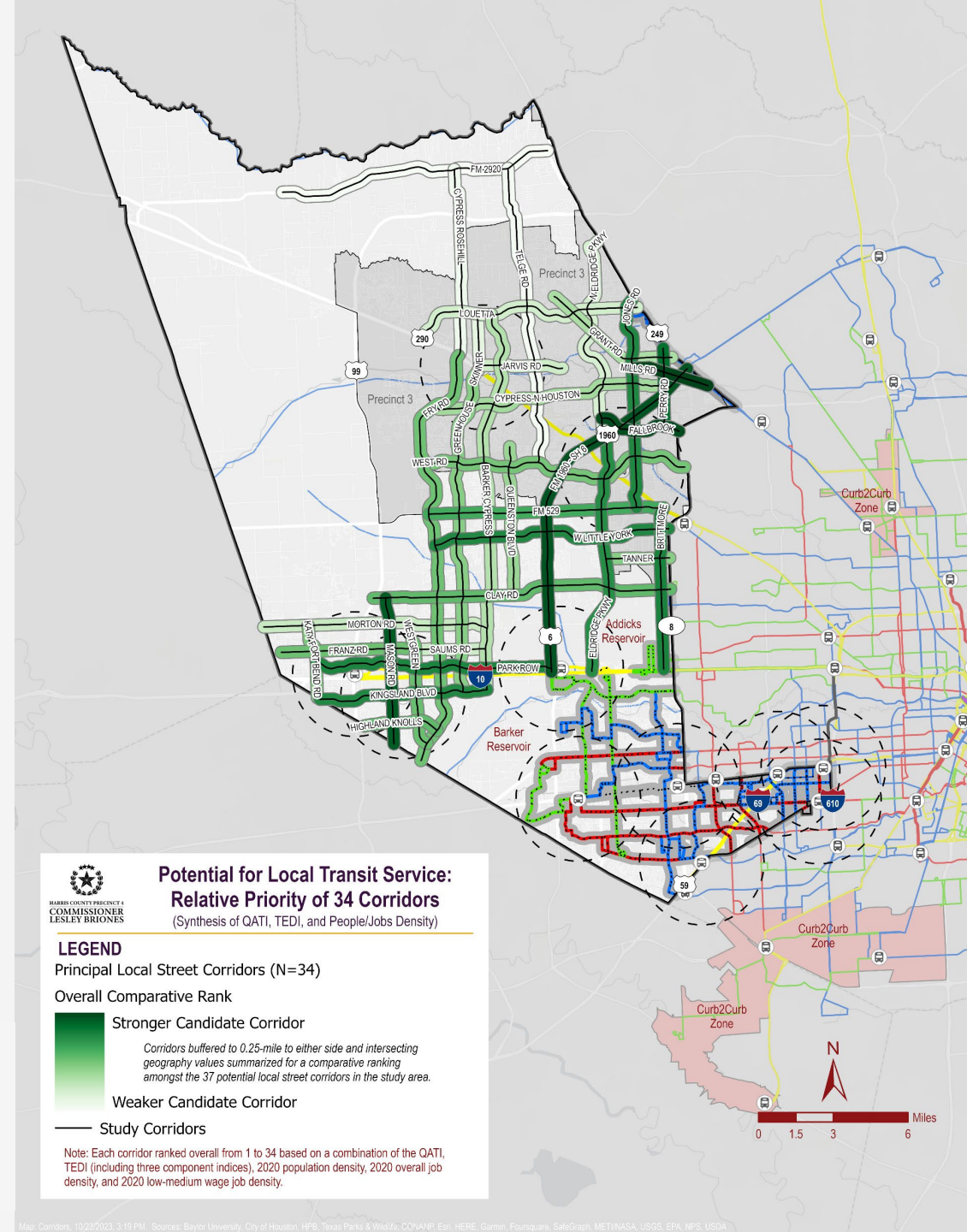




# Connecting Places

## West Harris County Transit Demand Study

- Ridership modeling identified demand for new fixed route services along various corridors.
- All potential routes were scored using indices that incorporate equity, likely usage, environmental suitability, and population, housing, and job density.



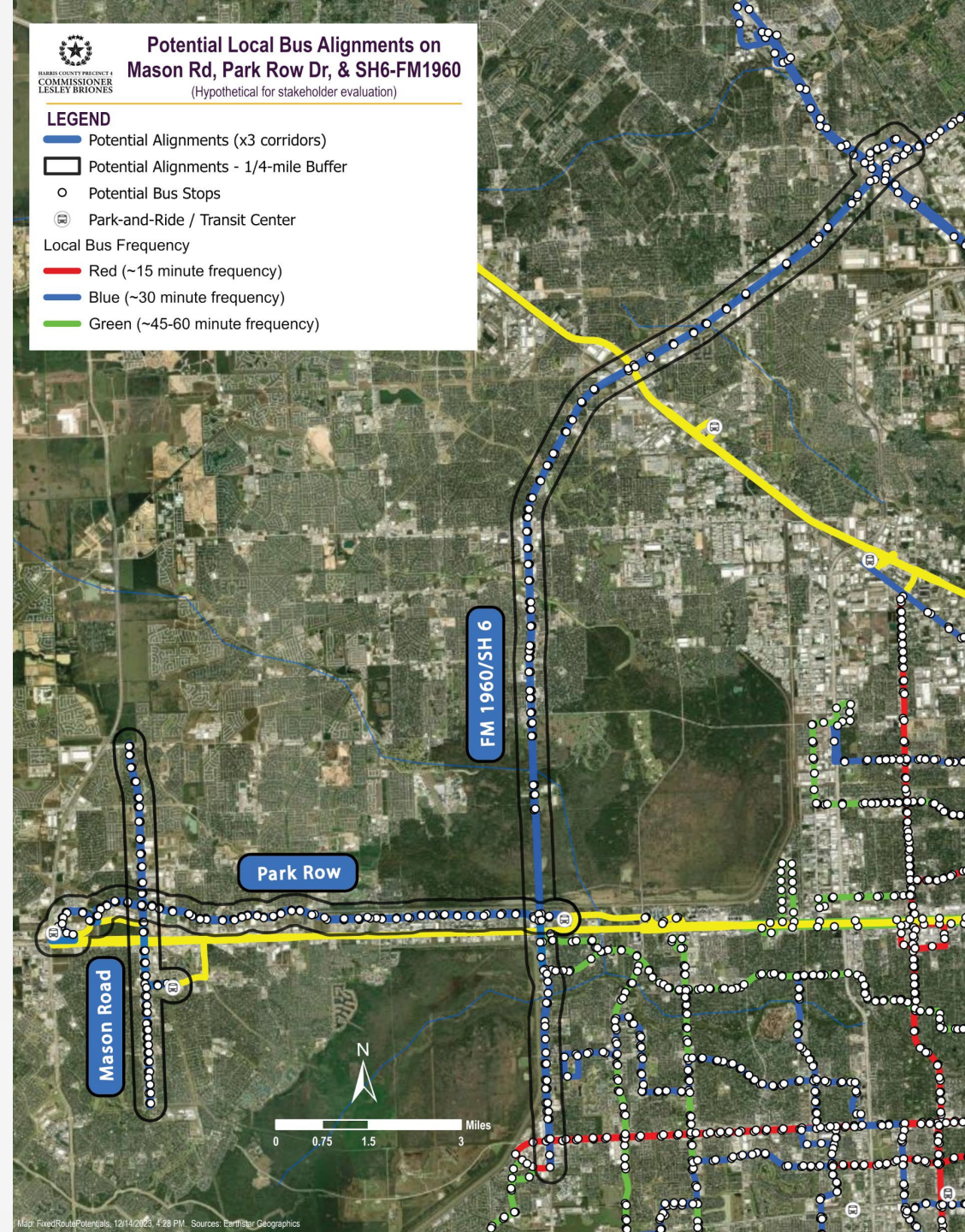


# Connecting Places

## West Harris County Transit Demand Study

3 corridors for fixed-route service:

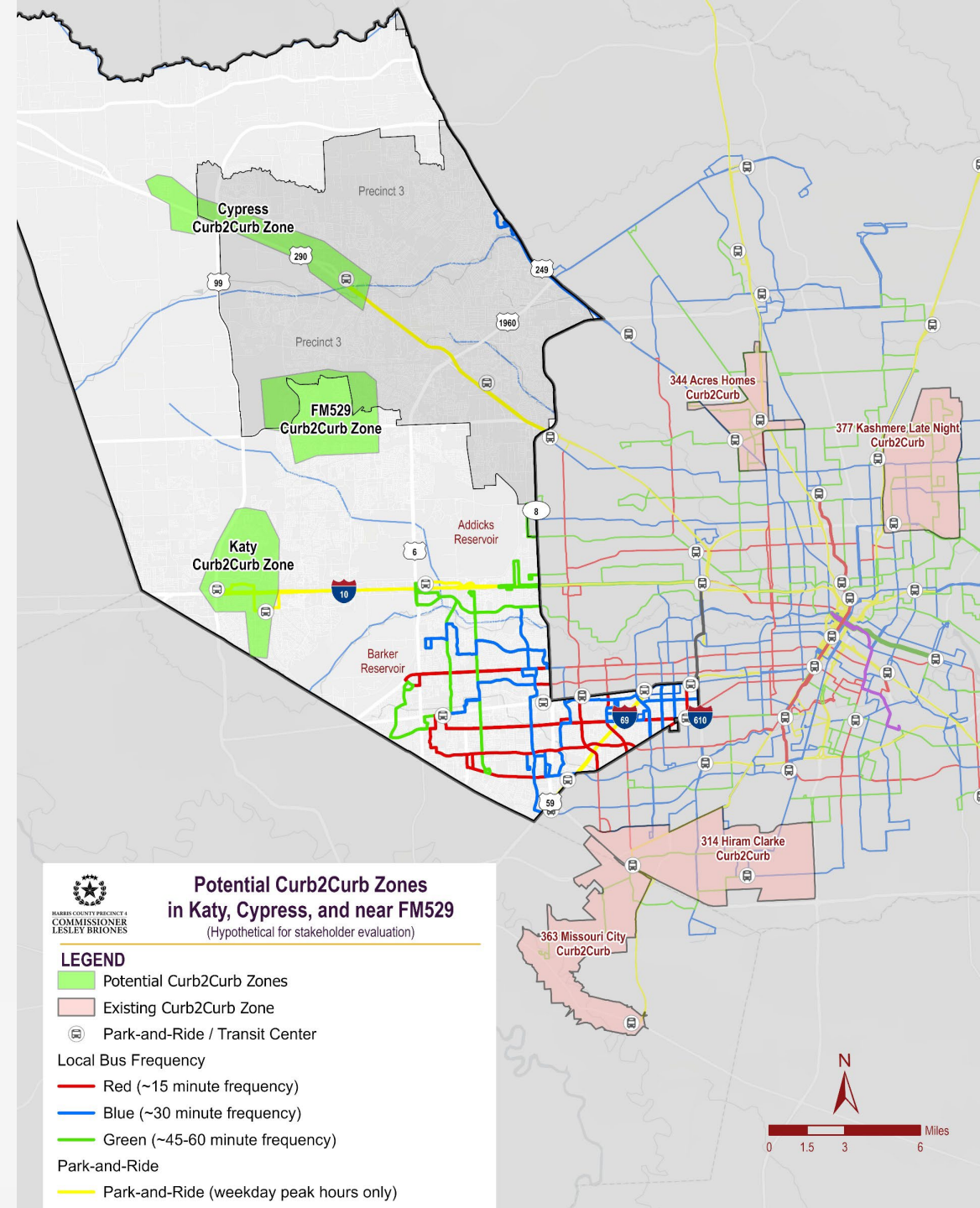
- Park Row
- Mason Road
- FM 1960/SH 6





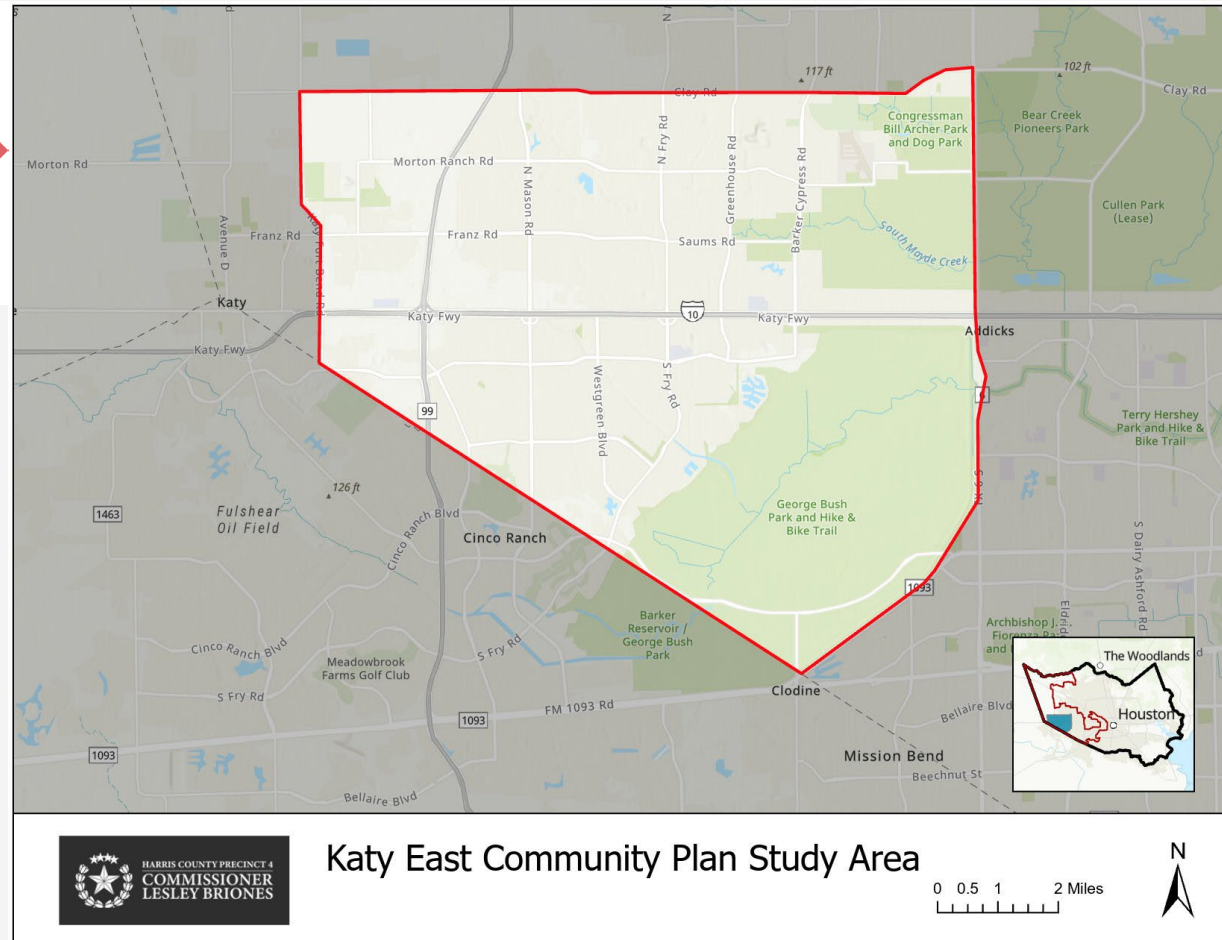
# West Harris County Transit Demand Study

- New on-demand transit recommendations in Katy, Cypress, and along FM 529 could fill gaps where service isn't available today.
- Could feed into the Katy Grand Park and Ride, Kingsland Park and Ride, and future fixed-route service on Mason and Park Row.
- Areas workshopped in 2023 with METRO departments, H-GAC, Fort Bend County Transit, Harris County Transit, and City of Houston.



# Connecting Places

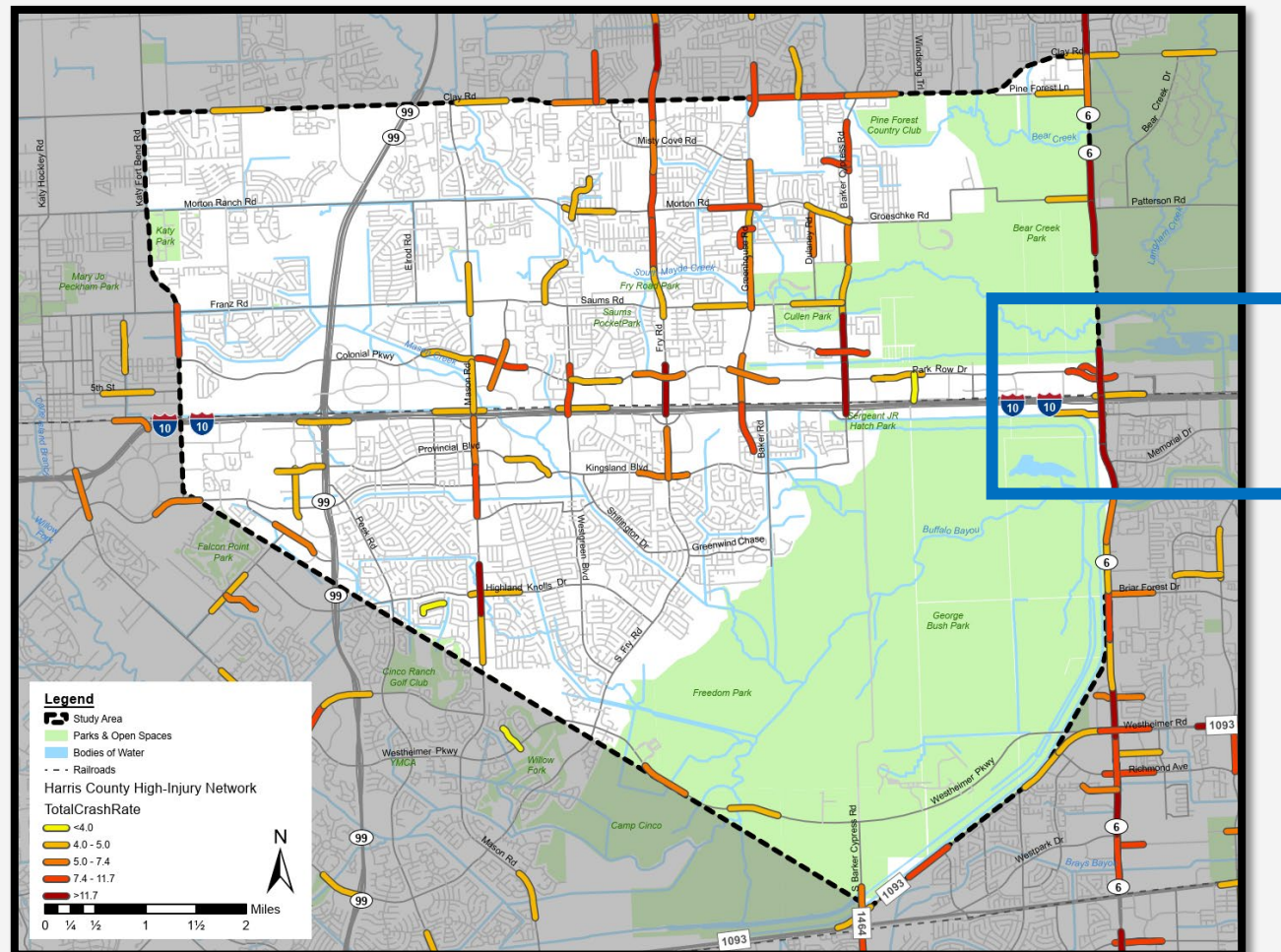
Creating new planning efforts in communities without





# Connecting Places

And focusing efforts on our high-injury network



# Connecting Places

## Park Row and North Dairy Ashford Multimodal Connectivity Project

- **\$8.7M project** with a \$7M investment by Precinct 4
- Partnership with the **Energy Corridor District**
- 3.5-mile project includes:
  - 6 intersection safety enhancements (3 on high-injury network)
  - Expanded sidewalks and shared-use paths
  - Regional trail connection (Katy to Downtown)
  - Regional transit connections at Addicks Park & Ride (future TOD site)

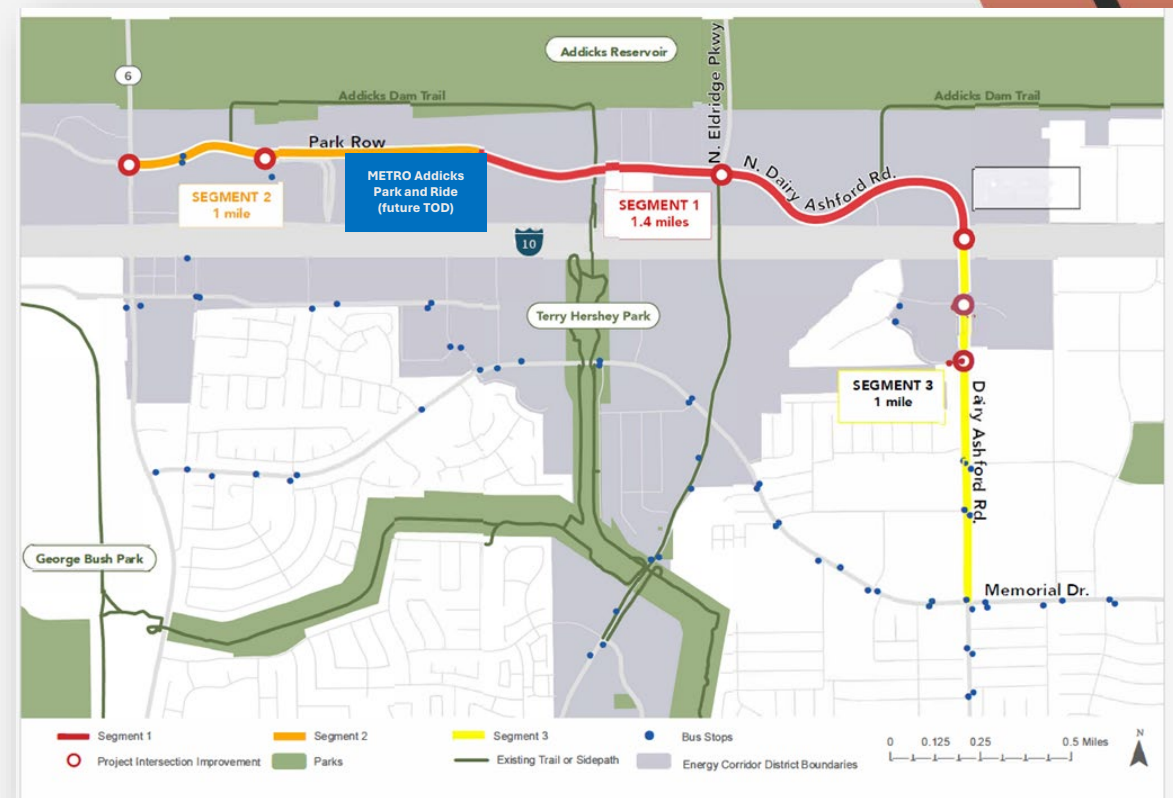


Image Courtesy: Energy Corridor District



HARRIS COUNTY PRECINCT 4  
COMMISSIONER  
LESLEY BRIONES



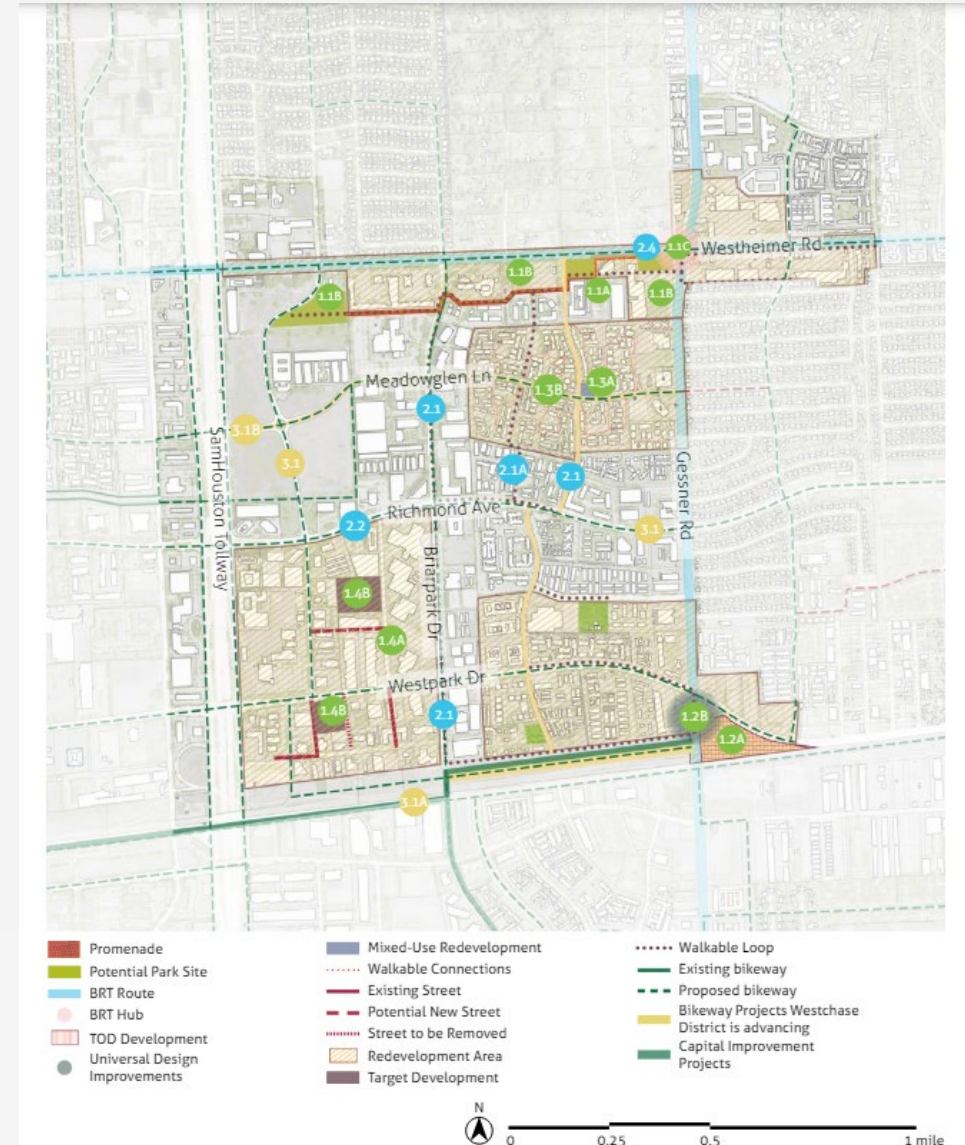
# Westpark Tollway Study & Reconnect Alief

- 
- The map displays the study area for the HCTRA project, highlighting the proposed transit line in orange. The map includes various transportation features such as highways (Interstate 10, State Road 99, State Road 1463, State Road 1464, State Road 1876, State Road 1092), local roads (Morton Rd, N. Mason Rd, Franz Rd, Kingsland Blvd, Westheimer Pkwy, FM 1093, FM 1092, FM 1091, FM 1090, FM 1089, FM 1088, FM 1087, FM 1086, FM 1085, FM 1084, FM 1083, FM 1082, FM 1081, FM 1080, FM 1079, FM 1078, FM 1077, FM 1076, FM 1075, FM 1074, FM 1073, FM 1072, FM 1071, FM 1070, FM 1069, FM 1068, FM 1067, FM 1066, FM 1065, FM 1064, FM 1063, FM 1062, FM 1061, FM 1060, FM 1059, FM 1058, FM 1057, FM 1056, FM 1055, FM 1054, FM 1053, FM 1052, FM 1051, FM 1050, FM 1049, FM 1048, FM 1047, FM 1046, FM 1045, FM 1044, FM 1043, FM 1042, FM 1041, FM 1040, FM 1039, FM 1038, FM 1037, FM 1036, FM 1035, FM 1034, FM 1033, FM 1032, FM 1031, FM 1030, FM 1029, FM 1028, FM 1027, FM 1026, FM 1025, FM 1024, FM 1023, FM 1022, FM 1021, FM 1020, FM 1019, FM 1018, FM 1017, FM 1016, FM 1015, FM 1014, FM 1013, FM 1012, FM 1011, FM 1010, FM 1009, FM 1008, FM 1007, FM 1006, FM 1005, FM 1004, FM 1003, FM 1002, FM 1001, FM 1000, FM 999, FM 998, FM 997, FM 996, FM 995, FM 994, FM 993, FM 992, FM 991, FM 990, FM 989, FM 988, FM 987, FM 986, FM 985, FM 984, FM 983, FM 982, FM 981, FM 980, FM 979, FM 978, FM 977, FM 976, FM 975, FM 974, FM 973, FM 972, FM 971, FM 970, FM 969, FM 968, FM 967, FM 966, FM 965, FM 964, FM 963, FM 962, FM 961, FM 960, FM 959, FM 958, FM 957, FM 956, FM 955, FM 954, FM 953, FM 952, FM 951, FM 950, FM 949, FM 948, FM 947, FM 946, FM 945, FM 944, FM 943, FM 942, FM 941, FM 940, FM 939, FM 938, FM 937, FM 936, FM 935, FM 934, FM 933, FM 932, FM 931, FM 930, FM 929, FM 928, FM 927, FM 926, FM 925, FM 924, FM 923, FM 922, FM 921, FM 920, FM 919, FM 918, FM 917, FM 916, FM 915, FM 914, FM 913, FM 912, FM 911, FM 910, FM 909, FM 908, FM 907, FM 906, FM 905, FM 904, FM 903, FM 902, FM 901, FM 900, FM 899, FM 898, FM 897, FM 896, FM 895, FM 894, FM 893, FM 892, FM 891, FM 890, FM 889, FM 888, FM 887, FM 886, FM 885, FM 884, FM 883, FM 882, FM 881, FM 880, FM 879, FM 878, FM 877, FM 876, FM 875, FM 874, FM 873, FM 872, FM 871, FM 870, FM 869, FM 868, FM 867, FM 866, FM 865, FM 864, FM 863, FM 862, FM 861, FM 860, FM 859, FM 858, FM 857, FM 856, FM 855, FM 854, FM 853, FM 852, FM 851, FM 850, FM 849, FM 848, FM 847, FM 846, FM 845, FM 844, FM 843, FM 842, FM 841, FM 840, FM 839, FM 838, FM 837, FM 836, FM 835, FM 834, FM 833, FM 832, FM 831, FM 830, FM 829, FM 828, FM 827, FM 826, FM 825, FM 824, FM 823, FM 822, FM 821, FM 820, FM 819, FM 818, FM 817, FM 816, FM 815, FM 814, FM 813, FM 812, FM 811, FM 810, FM 809, FM 808, FM 807, FM 806, FM 805, FM 804, FM 803, FM 802, FM 801, FM 800, FM 799, FM 798, FM 797, FM 796, FM 795, FM 794, FM 793, FM 792, FM 791, FM 790, FM 789, FM 788, FM 787, FM 786, FM 785, FM 784, FM 783, FM 782, FM 781, FM 780, FM 779, FM 778, FM 777, FM 776, FM 775, FM 774, FM 773, FM 772, FM 771, FM 770, FM 769, FM 768, FM 767, FM 766, FM 765, FM 764, FM 763, FM 762, FM 761, FM 760, FM 759, FM 758, FM 757, FM 756, FM 755, FM 754, FM 753, FM 752, FM 751, FM 750, FM 749, FM 748, FM 747, FM 746, FM 745, FM 744, FM 743, FM 742, FM 741, FM 740, FM 739, FM 738, FM 737, FM 736, FM 735, FM 734, FM 733, FM 732, FM 731, FM 730, FM 729, FM 728, FM 727, FM 726, FM 725, FM 724, FM 723, FM 722, FM 721, FM 720, FM 719, FM 718, FM 717, FM 716, FM 715, FM 714, FM 713, FM 712, FM 711, FM 710, FM 709, FM 708, FM 707, FM 706, FM 705, FM 704, FM 703, FM 702, FM 701, FM 700, FM 699, FM 698, FM 697, FM 696, FM 695, FM 694, FM 693, FM 692, FM 691, FM 690, FM 689, FM 688, FM 687, FM 686, FM 685, FM 684, FM 683, FM 682, FM 681, FM 680, FM 679, FM 678, FM 677, FM 676, FM 675, FM 674, FM 673, FM 672, FM 671, FM 670, FM 669, FM 668, FM 667, FM 666, FM 665, FM 664, FM 663, FM 662, FM 661, FM 660, FM 659, FM 658, FM 657, FM 656, FM 655, FM 654, FM 653, FM 652, FM 651, FM 650, FM 649, FM 648, FM 647, FM 646, FM 645, FM 644, FM 643, FM 642, FM 641, FM 640, FM 639, FM 638, FM 637, FM 636, FM 635, FM 634, FM 633, FM 632, FM 631, FM 630, FM 629, FM 628, FM 627, FM 626, FM 625, FM 624, FM 623, FM 622, FM 621, FM 620, FM 619, FM 618, FM 617, FM 616, FM 615, FM 614, FM 613, FM 612, FM 611, FM 610, FM 609, FM 608, FM 607, FM 606, FM 605, FM 604, FM 603, FM 602, FM 601, FM 600, FM 599, FM 598, FM 597, FM 596, FM 595, FM 594, FM 593, FM 592, FM 591, FM 590, FM 589, FM 588, FM 587, FM 586, FM 585, FM 584, FM 583, FM 582, FM 581, FM 580, FM 579, FM 578, FM 577, FM 576, FM 575, FM 574, FM 573, FM 572, FM 571, FM 570, FM 569, FM 568, FM 567, FM 566, FM 565, FM 564, FM 563, FM 562, FM 561, FM 560, FM 559, FM 558, FM 557, FM 556, FM 555, FM 554, FM 553, FM 552, FM 551, FM 550, FM 549, FM 548, FM 547, FM 546, FM 545, FM 544, FM 543, FM 542, FM 541, FM 540, FM 539, FM 538, FM 537, FM 536, FM 535, FM 534, FM 533, FM 532, FM 531, FM 530, FM 529, FM 528, FM 527, FM 526, FM 525, FM 524, FM 523, FM 522, FM 521, FM 520, FM 519, FM 518, FM 517, FM 516, FM 515, FM 514, FM 513, FM 512, FM 511, FM 510, FM 509, FM 508, FM 507, FM 506, FM 505, FM 504, FM 503, FM 502, FM 501, FM 500, FM 499, FM 498, FM 497, FM 496, FM 495, FM 494, FM 493, FM 492, FM 491, FM 490, FM 489, FM 488, FM 487, FM 486, FM 485, FM 484, FM 483, FM 482, FM 481, FM 480, FM 479, FM 478, FM 477, FM 476, FM 475, FM 474, FM 473, FM 472, FM 471, FM 470, FM 469, FM 468, FM 467, FM 466, FM 465, FM 464, FM 463, FM 462, FM 461, FM 460, FM 459, FM 458, FM 457, FM 456, FM 455, FM 454, FM 453, FM 452, FM 451, FM 450, FM 449, FM 44

# Connecting People

## Westchase District Promenade

- **Retrofitting** suburban business districts.
- **Connectivity** to the regional trail network.
- **Creating internal trail network** that can be used for transport, recreation, leisure, etc.



Images Courtesy of Westchase District



# Connecting People

## Westchase District Promenade

- **\$3.5 Million project** with a \$2M investment from Precinct 4 (Phase 1 and 2).
- **Partnership** with the Westchase District.
- **Creates a new front yard for walkable**, mixed-use development in one of the region's largest business districts.



Images Courtesy of Westchase District





# Major thoroughfares in unincorporated Harris County





# Connecting People

## Sidewalk Gap Initiative

- **\$20 Million investment** in 50 miles of “short-term” sidewalk projects in FY25 (30 total projects).
- **Predominantly in unincorporated communities** adjacent to Houston.
- **Streamlined the contract** and chartered as a planning and design contract with an on-call construction contractor ready to go.



HARRIS COUNTY PRECINCT 4  
COMMISSIONER  
LESLEY BRIONES



# Connecting People

## Sidewalk Gap: Methodology

- **Crowdsourced** over 80 potential projects.
- **Prioritized** based on 10 planning level criteria. *i.e. proximity to schools, parks, bus stops, car ownership, etc.*
- **Screened** via 17 engineering/design criteria (y/n binary). *i.e. ROW needs, utility relocations, drainage issues, etc.*



HARRIS COUNTY PRECINCT 4  
COMMISSIONER  
LESLEY BRIONES

# Connecting People

## Sidewalk Gap: Streamlining the project delivery process

October 2024 –  
January 2025

### Planning

- **Identified** 36 of 80 potential projects as short-term (only 30 funded in FY25).

February 2025 –  
October 2025

### Engineering

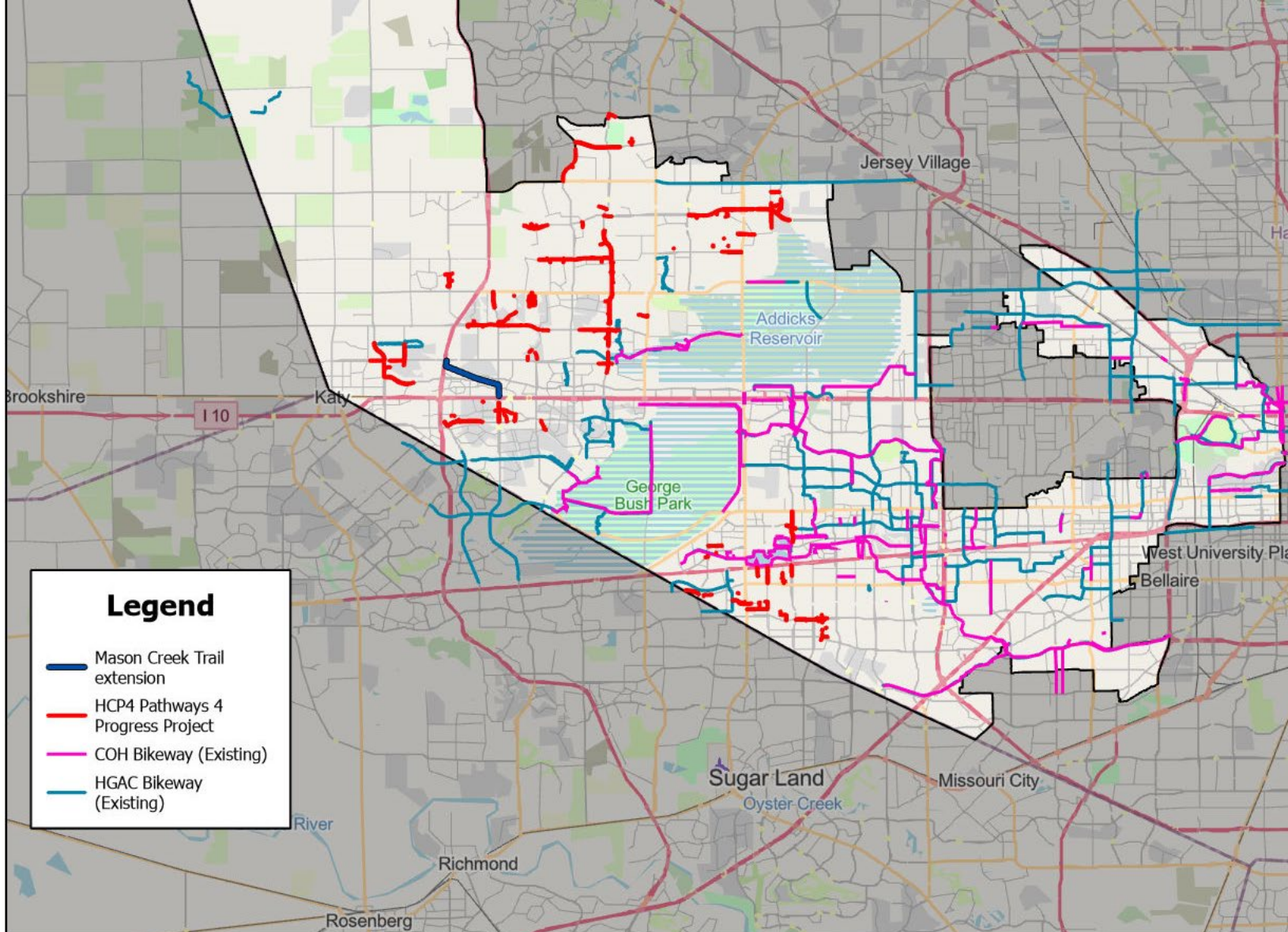
- **Designing** in tranches, 4-5 projects ready for review every 6-9 weeks.
- **2-week client review.** 10 weeks for survey.
- **21-day notification** protocol to surrounding businesses and HOAs.

April 2025–  
December 2025

### Construction

- **On-call construction** contractor set up in parallel. 100% M/WBE
- **Construction ongoing** through end of year.





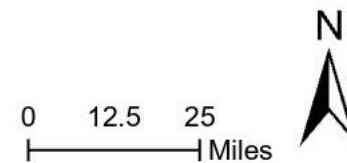
**Legend**

- Mason Creek Trail extension
- HCP4 Pathways 4 Progress Project
- COH Bikeway (Existing)
- HGAC Bikeway (Existing)



HARRIS COUNTY PRECINCT 4  
COMMISSIONER  
LESLEY BRIONES

## HCP4 Pathways 4 Progress Project

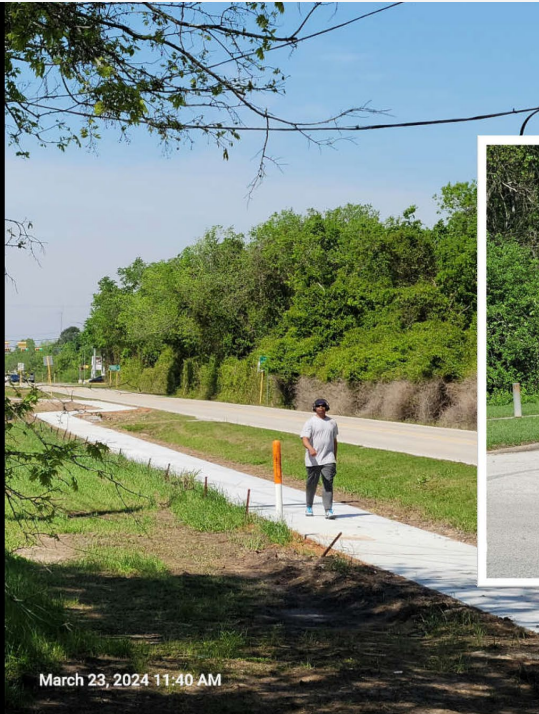




# Connecting People

## Pathways 4 Progress: Fan mail!

An apartment dweller takes advantage of the new connectivity.



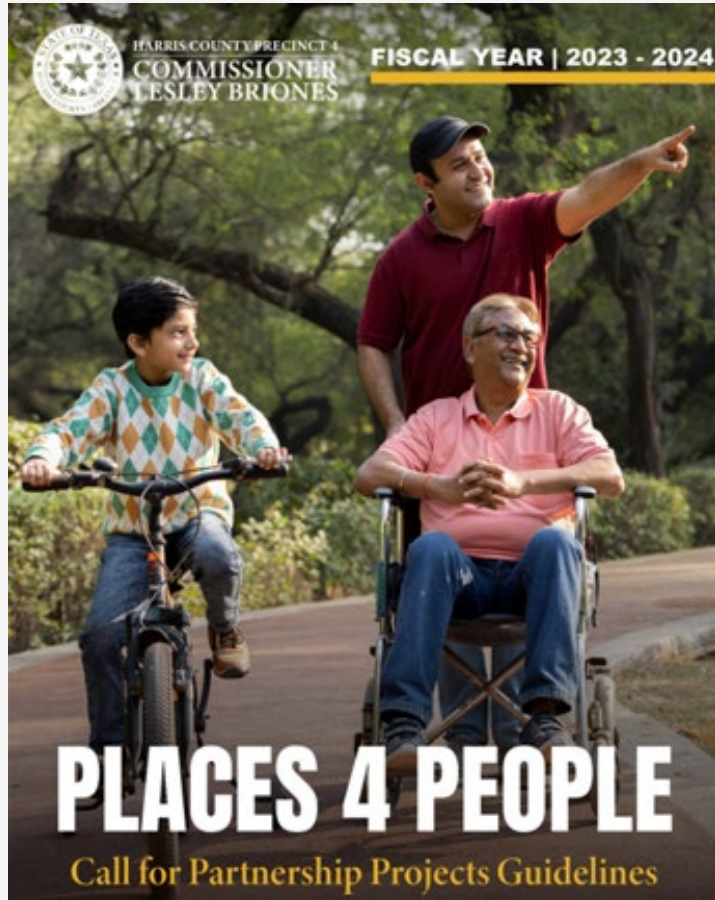
Together with Fry Road MUD, the County has completed sidewalks on both sides of Park Row, to Price Plaza Drive.



HARRIS COUNTY PRECINCT 4  
**COMMISSIONER  
LESLEY BRIONES**



# Year Two Schedule



## Schedule:

March 27, 2024	FY 24 Places 4 People Call 4 Projects Launch
May 15, 2024	Office Hours: 2 p.m. (1 hour)
May 16, 2024	Office Hours: 2 p.m. (1 hour)
June 7, 2024	Applicant Proposal submittal deadline
October 21-25, 2024	Precinct Publication of Awards
November 2024 – September 2025	Post Award: Interlocal Agreement Negotiation
October 2025 – 2028	Funding, Design and/or Construction Start



HARRIS COUNTY PRECINCT 4  
COMMISSIONER  
LESLEY BRIONES



Luis Guajardo, AICP  
Director of Planning & Community Development  
Harris County Precinct 4  
[lguajardo@hcp4.net](mailto:lguajardo@hcp4.net)



HARRIS COUNTY PRECINCT 4  
**COMMISSIONER  
LESLEY BRIONES**