

# Effectiveness of Pedestrian Crossing Treatments at Night

Kay Fitzpatrick

Texas A&M Transportation  
Institute



# Background

- Texas, between 2010 and 2016:
  - 3434 fatal pedestrian crashes representing 16 percent of all fatal crashes
- Large majority of fatal pedestrian crashes occur during nighttime (79 percent)



# Goal

- Compare the day and night operational performance of the PHB, RRFB, and LED-Em treatments



# Study Approach

- Goal: 30 sites, both daytime and nighttime
- Site identification:
  - Build upon previous year's study of LED-Ems
  - Updated list of PHBs in Austin
  - TextITE e-newsletter request, especially for RRFBs



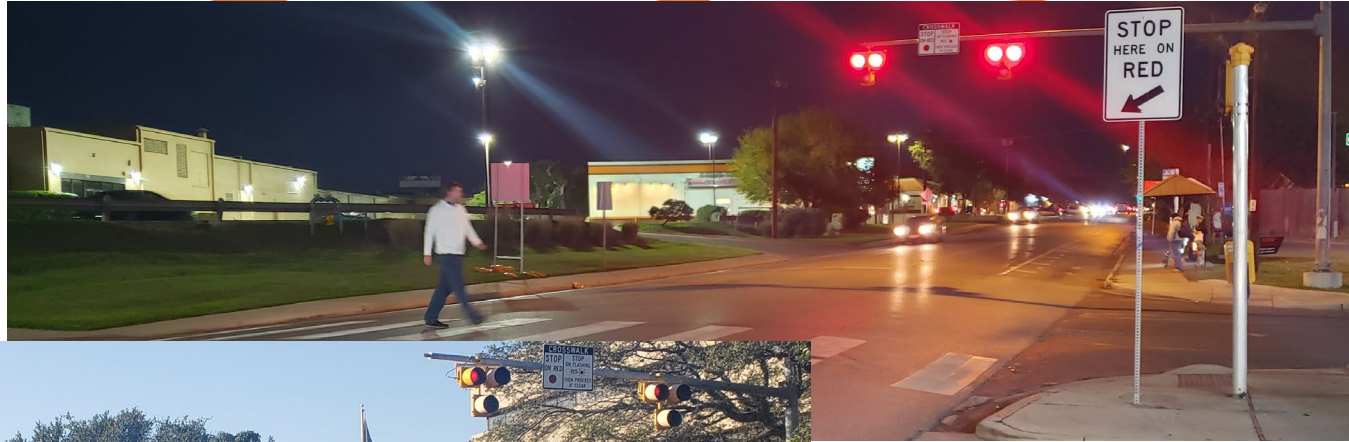
# Number of Sites

- Site selection:
  - Goal of 10 sites for each treatment of interest
  - Range of posted speed limits and median type
  - Limit to 2- or 4-lane roads
  - Data collection efficiency

TYPE	DAY OR NIGHT	SITES
LED-Em	Day	13
LED-Em	Night	6
PHB	Day	10
PHB	Night	10
RRFB	Day	12
RRFB	Night	11

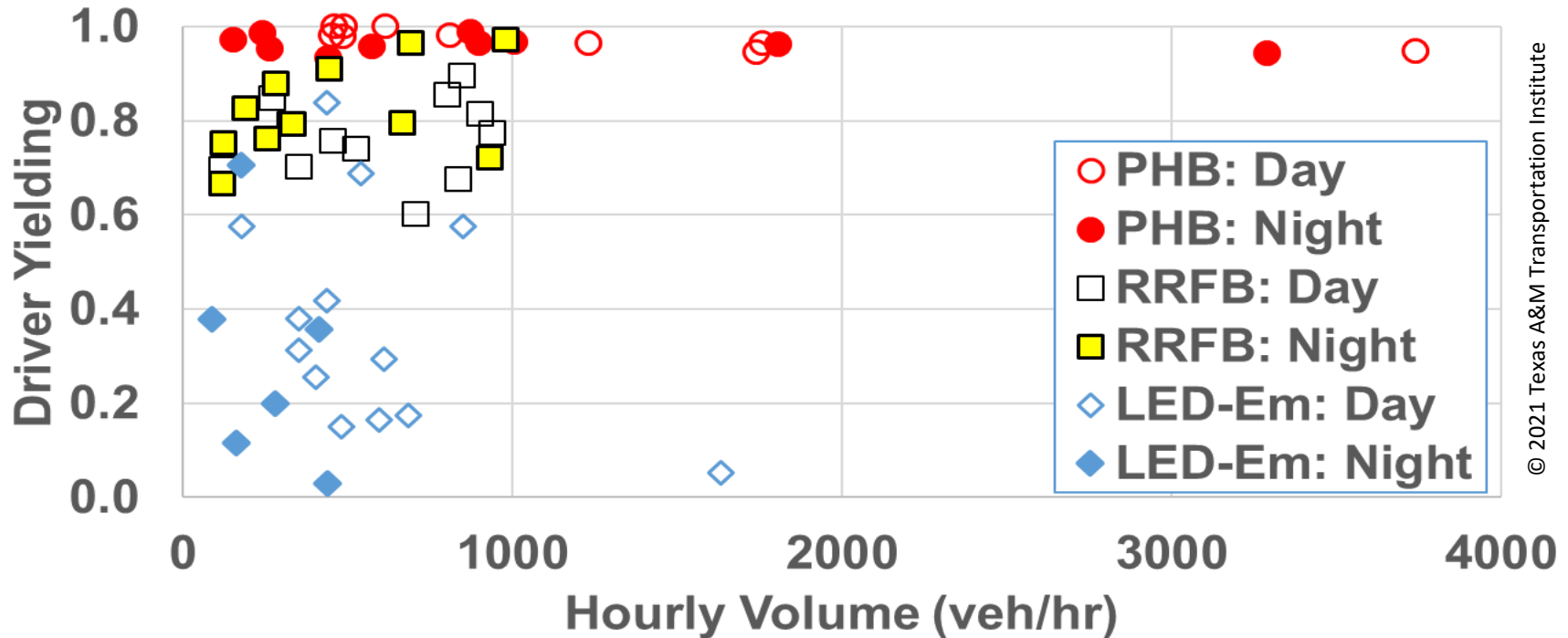
# Data Collection

Protocol: 60 staged pedestrian crossing events or 4-hours of data



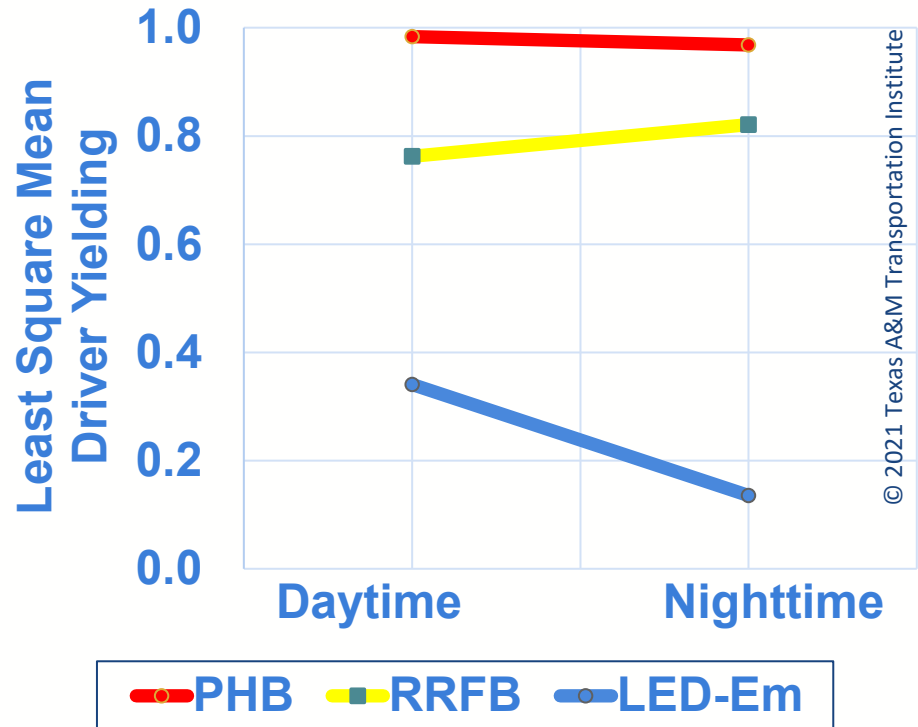
When: November 2019 to February 2020, May 2019

# Driver Yielding by Hourly Volume, Per Site and Light Level



# Day / Night

- Consider all data
- Treatment type (results are different, statistically)
- PHB = similar day & night
- RRFB = higher at night (not statistically significant)
- LED-Em = higher at day (statistically significant)



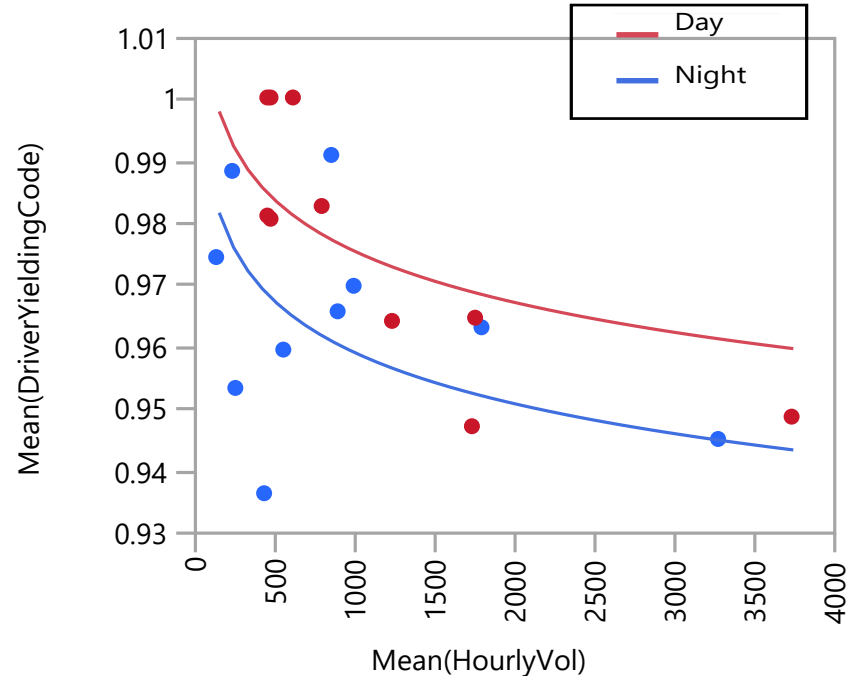
# Posted Speed Limit

- Consider all data
- Low speed = 20 (school zone), 30, or 35 mph
- High speed = 40, 45, or 50 mph

LSM Differences Tukey HSD					
Level	#Sites	A	B	C	Least Square Mean (LSM)
PHB, Low	5	A			0.978
PHB, High	5	A			0.974
RRFB, Low	6	A			0.789
RRFB, High	6	A			0.795
LED-Em, Low	10		B		0.376
LED-Em, High	3			C	0.101

# PHB

- Data for 10 PHB sites
- Significant variables:
  - Light level
    - Higher driver yielding during daytime (98% compared to 96%), but not practically different
  - Hourly volume
    - Slightly lower driver yielding at higher volumes, again not practically different



# RRFB

- Previous studies found higher driver yielding for:
  - 2-leg (midblock)
  - Median refuge present
  - School within 0.5 mile
  - Advance yield lines present
- Current study included data for 12 RRFB sites
  - Limited additional insights, demonstrates that site conditions greatly influence driver yielding for this type of device
  - Support use of advance yield lines

© 2021 Texas A&M Transportation Institute



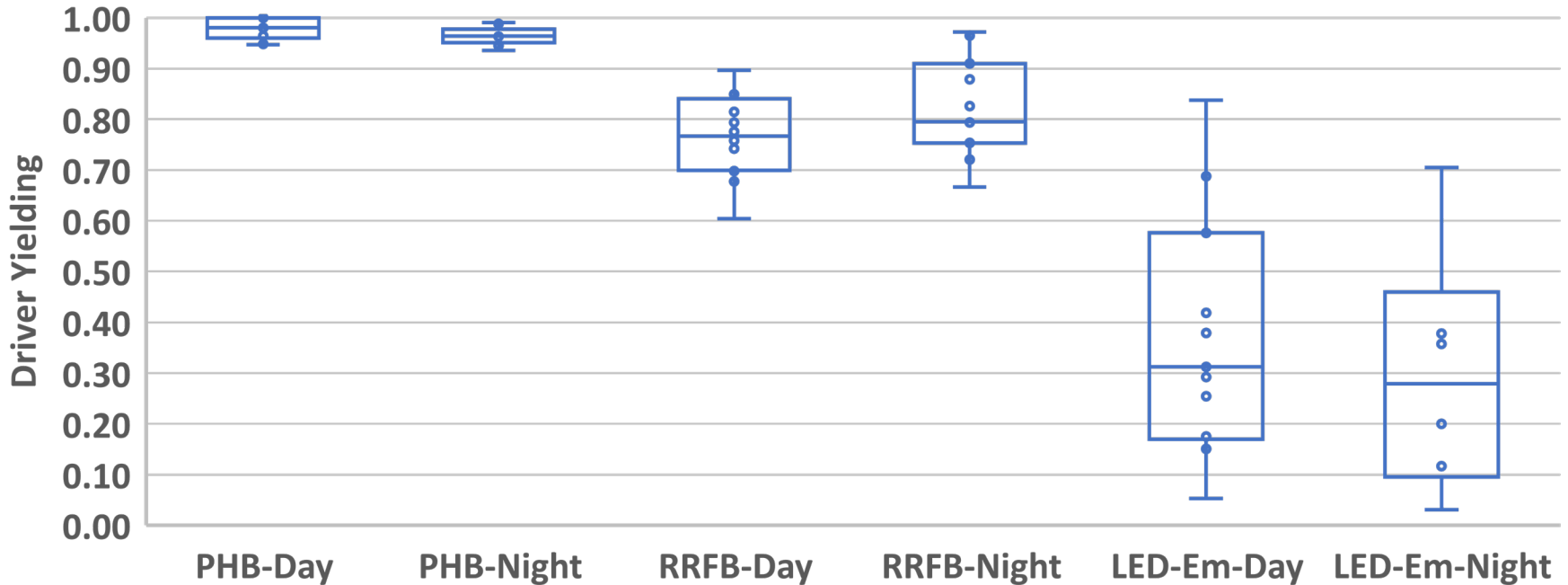
# LED-Em

- Number of sites: 13 daytime, 6 nighttime
- Findings, higher driver yielding for:
  - Lower speed limit group (20-school zone, 30-35 mph)
  - 2 lanes rather than 4 lanes
  - Narrow lanes (10.5-11 ft rather 11.5-12 ft)
  - Lower hourly volumes
  - Daytime
  - Advance yield line present

© 2021 Texas A&M Transportation Institute



# Is the Pedestrian Treatment More or Less Effective at Night?



# Questions...



Kay Fitzpatrick

[K-Fitzpatrick@tamu.edu](mailto:K-Fitzpatrick@tamu.edu)

Texas A&M Transportation Institute