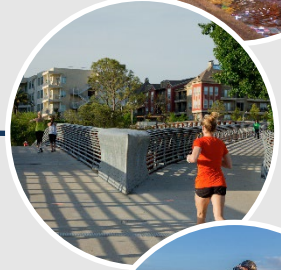
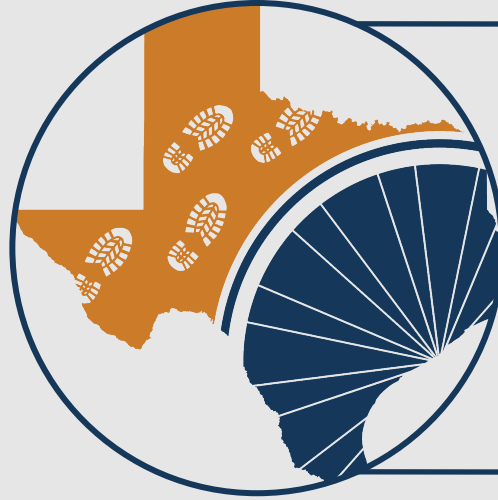
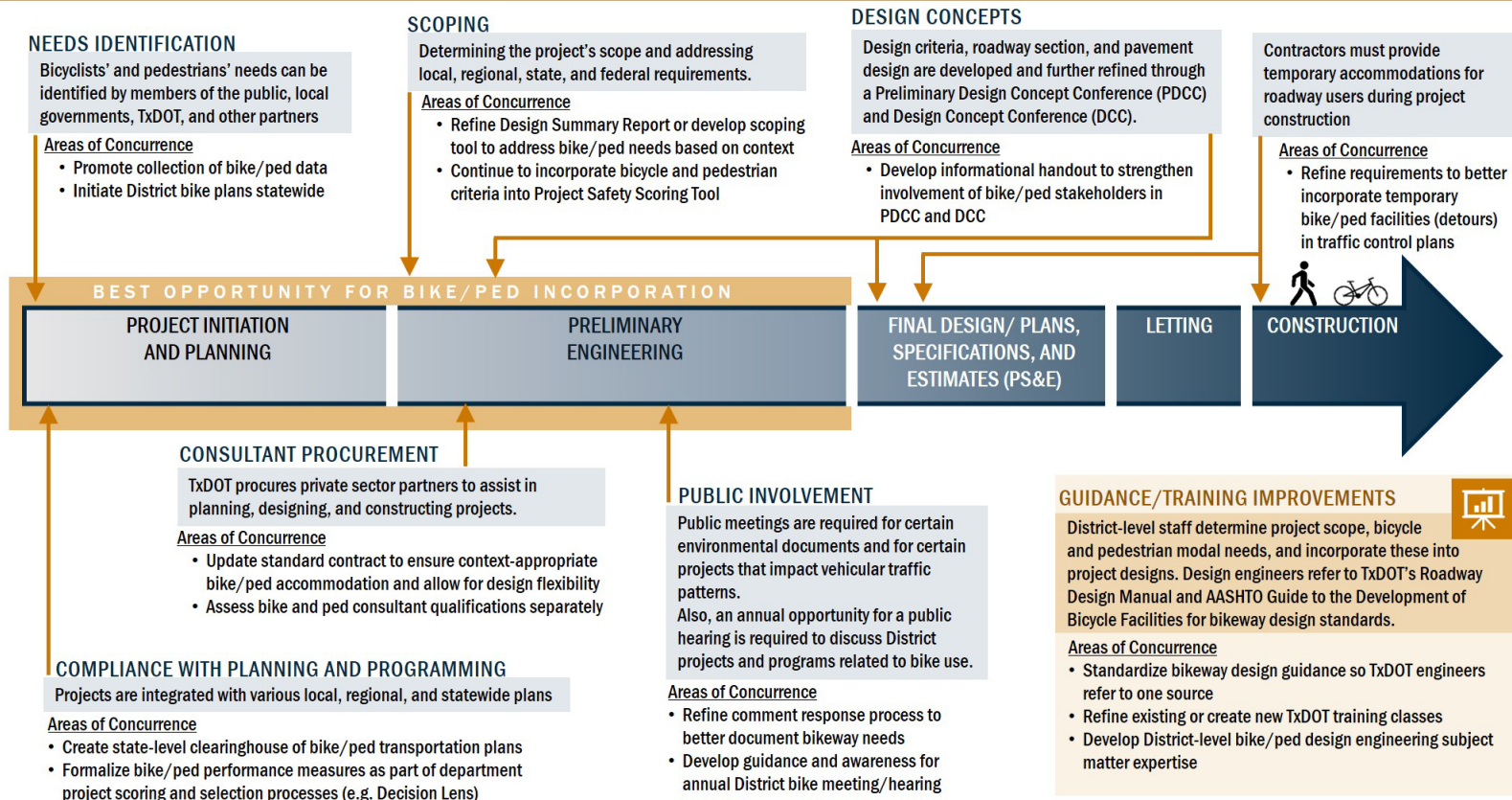
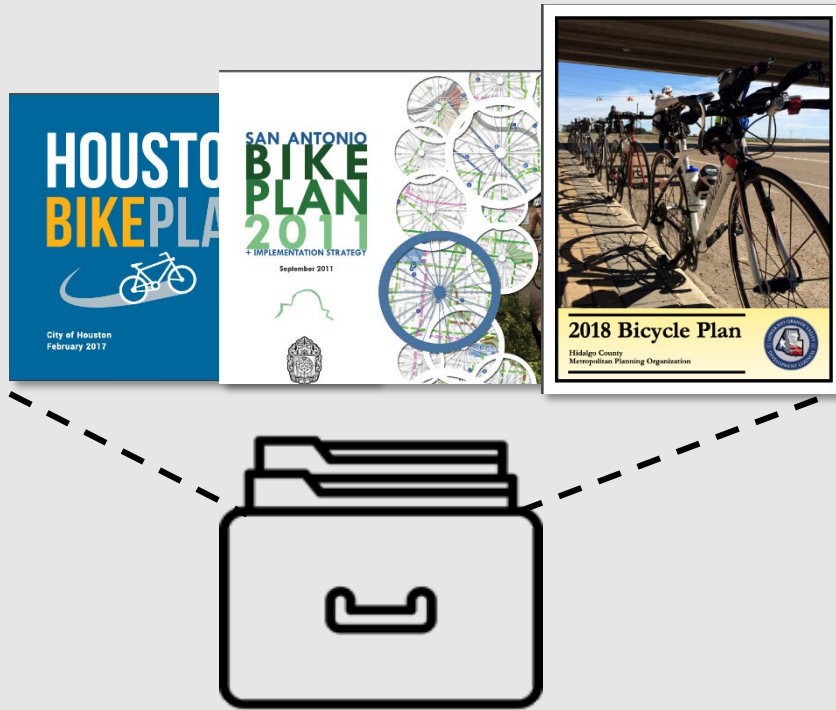


Texas Active Transportation Plan Inventory



Opportunities to better incorporate safe bicycle/pedestrian infrastructure into TxDOT project development processes





What is the Active Transportation Plan Inventory (ATPI)?

A map-based, central repository of bicycle, pedestrian, or any other form of human-powered, non-motorized transportation (e.g., micro mobility, skateboarding, wheelchair use, etc.)




Provide a centralized inventory of active transportation plans across Texas.

Enable easy access to active transportation plan by engineers and the public.

Increase collaboration and coordination among planning professionals.

Facilitate the development of safe bicycle and pedestrian networks.



TEXAS DEPARTMENT OF TRANSPORTATION
Connecting You With Texas Entertainment

A - Z Site Index | Contact Us | Español |

Driver | Government | Business | Inside TxDOT | Careers

Inside TxDOT

Get Involved | Media Center | Projects | Forms & Publications | Administration | Districts | Divisions

Modes of Travel

[Car](#)

[Marine](#)

[Public Transportation](#)

[Motorcycle](#)

[Air](#)

[Bicycle and Pedestrian](#)

[Truck](#)

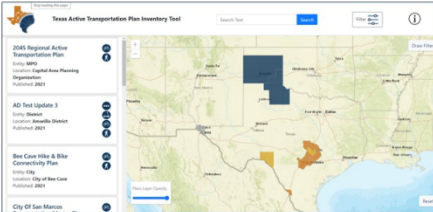
[Railroad](#)

Active Transportation Plan Inventory

[Texas Department of Transportation](#) > [Inside TxDOT](#)

The [Active Transportation Plan Inventory](#) is a map-based inventory of bicycle and pedestrian-related transportation plans published by planning entities at varying geographic levels across the state. It was created by TxDOT to assist planning entities, designers, engineers, and other planning professionals focused on active transportation with collaboration and coordination during project development by serving as a central repository of existing active transportation planning documents. Local planners are encouraged to input and update their active transportation plan details in the [Plan Submission Portal](#) to keep the inventory current and useful. Please review the [user guide](#) for instructions on how to submit your plan.

The Active Transportation Plan Inventory provides public users with easy access to active transportation plan information. Active Transportation Plan Inventory users can view and search the inventory of bicycle, pedestrian, and other active transportation plans across Texas by clicking on a map, selecting a plan, searching for key terms, or filtering by type of planning entity or active travel mode.



2046 Regional Active Transportation Plan
Jenks, Sarah
Location: Capital Area Planning Organization
Published: 2021

AD Test Update 3
Bryce, Michael
Location: Brazos Valley District
Published: 2021

Bee Cave Hills & Bike Connectivity Plan
Jenks, Sarah
Location: City of Bee Cave
Published: 2021

City of San Marcos

> How does the Active Transportation Plan Inventory benefit my organization?

> What is Active Transportation?

> Who can submit Active Transportation Plan information?

> What types of plans should be submitted?

TxDOT Landing Page

Active Transportation Plan Inventory

5

Active Transportation Plan Submission Portal

Welcome to the Texas Active Transportation Plan Submission Portal!

Use this self-service tool to add or update entries in the Texas Active Transportation Plan Inventory.

To begin, click on the map near the area applicable to the plan being added or updated. After selecting the appropriate Planning Area Boundary from the list of existing entity boundaries (or drawing your own), enter the plan details, then submit the information to TxDOT for review. Once the plan information is validated, the plan information will be available to view on the Texas Active Transportation Plan Inventory.

Click on the "Layers List" icon in the upper right to view layer options. Toggle layers on and off until the desired Planning Area Boundary appears in the list.

For more information, refer to the [user guide](#).

To explore the Active Transportation Plan Inventory, click [here](#).

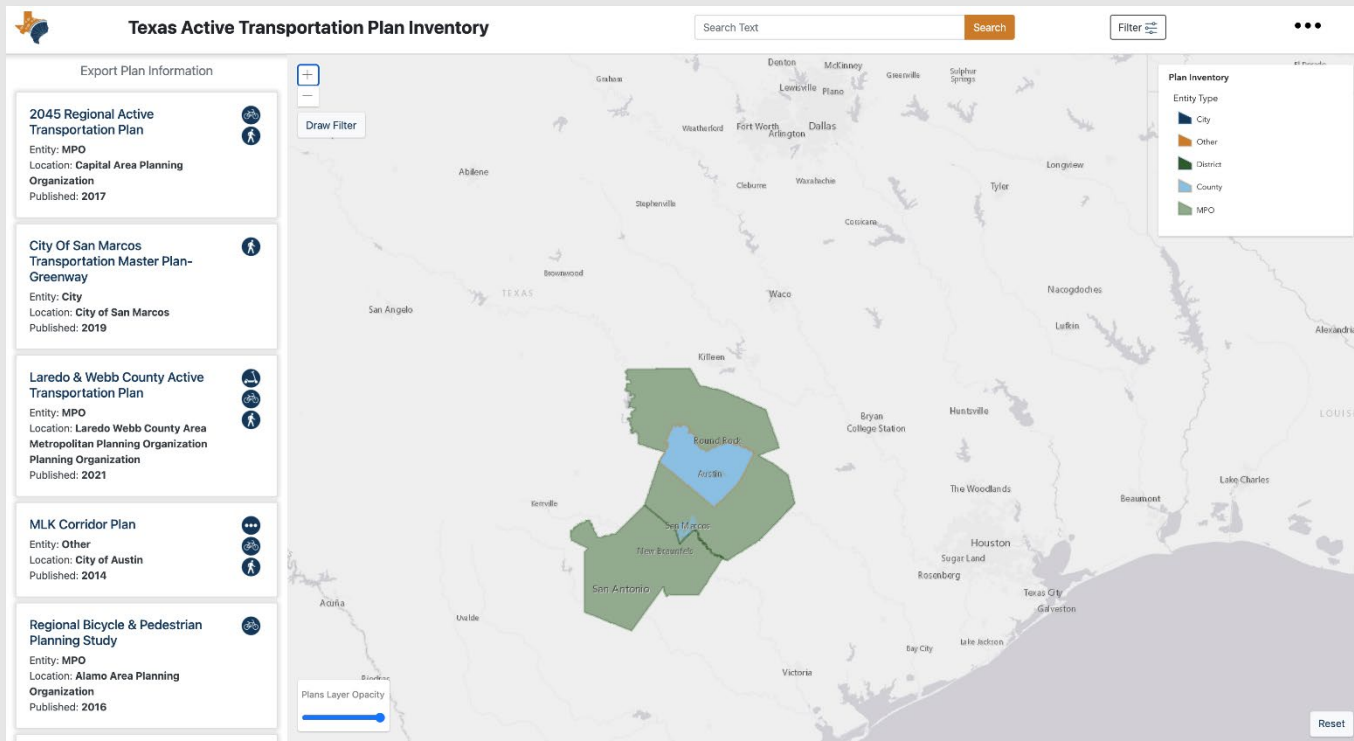
Zoom to a region on the map and click on the map to begin.

Layer List

Layers

- ☒ Plan Inventory
- ☐ City
- ☐ Other
- ☐ District
- ☐ County
- ☐ MPO
- ☒ TxDOT_Districts
- ☒ Texas County Boundaries
- ☒ Texas City Boundaries
- ☒ Texas MPO Boundaries

Plan Submission Portal



Active Transportation Plan Inventory



**Your
organization
should
contribute to
the Texas
active
transportation
plan inventory
because...**

Roadway designers will have easy access to your community's vision for building bicycle and pedestrian infrastructure and networks.

Planning professionals can easily find examples of different types of active transportation plans, goals and actions, and performance measures.

Awareness can facilitate coordinated and seamless transitions between communities to create integrated active transportation networks.

Local and regional entities can benchmark against their peers.

The more plans in the inventory, the greater the opportunity for statewide collaboration.

All these benefits combine to encourage safer and more sustainable active transportation networks in Texas!



This Tool only reaches its full potential if we have participation statewide.

How You Can Help

Upload your agency's Active Transportation Plans.

- Add to the inventory and encourage others to do so.

Forward TxDOT's emails.

- A familiar name helps.

Keep your plan information up to date.

- It only takes a few minutes!

Thank You!

Noah Heath, Project Manager

TxDOT Public Transportation Division

Noah.Heath@txdot.gov

