

# Walking in the Big Easy today...



2020 Texas Statewide  
Pedestrian Safety Forum  
August 6, 2020



# LOUISIANA STRATEGIC HIGHWAY SAFETY PLAN



JULY 2017

## VISION

Reach Destination Zero Deaths on Louisiana roadways

Reduce the human and economic toll on Louisiana's surface transportation system due to traffic crashes through widespread collaboration and an integrated 4E approach.

## MISSION

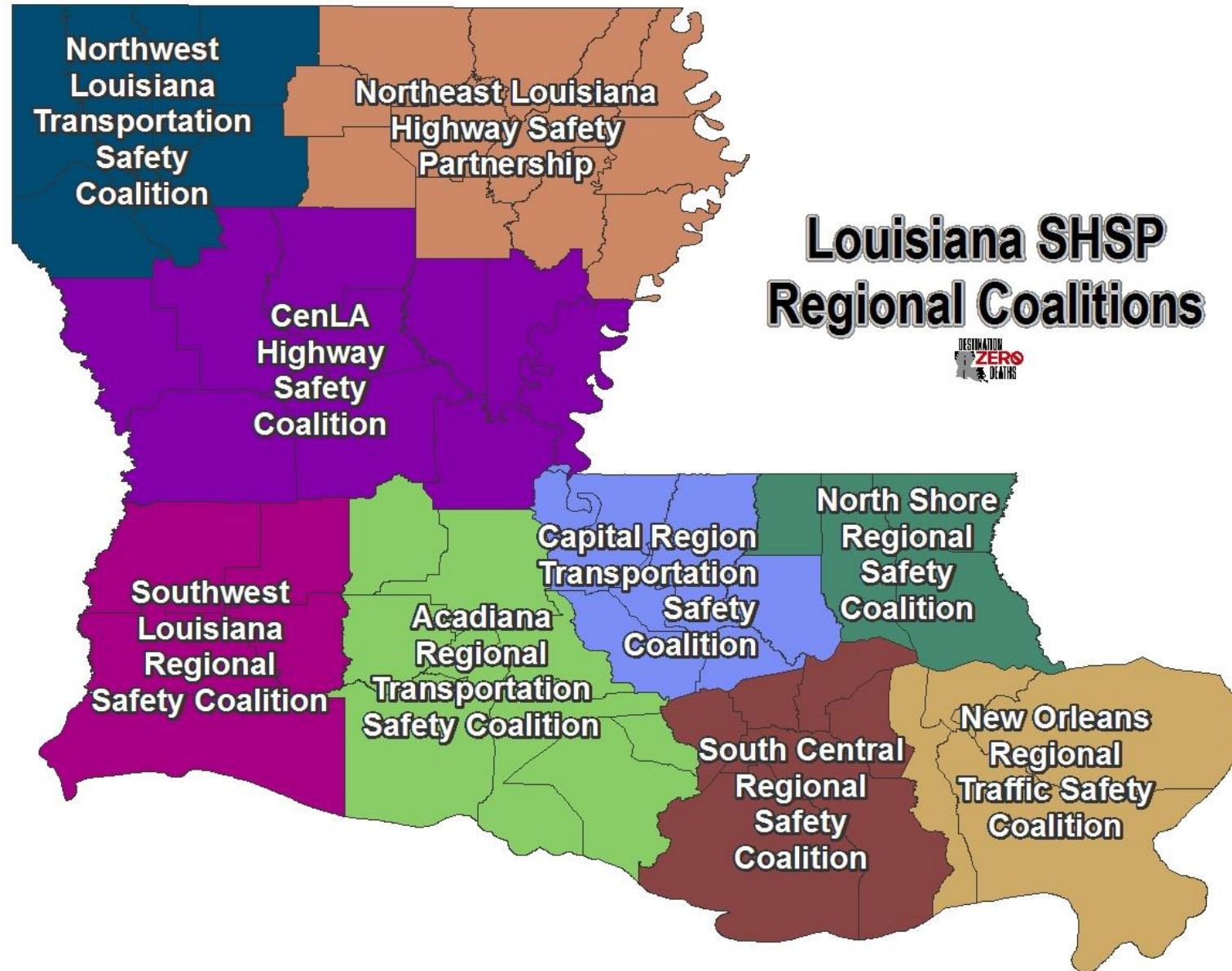
## GOAL

Halve fatalities by 2030

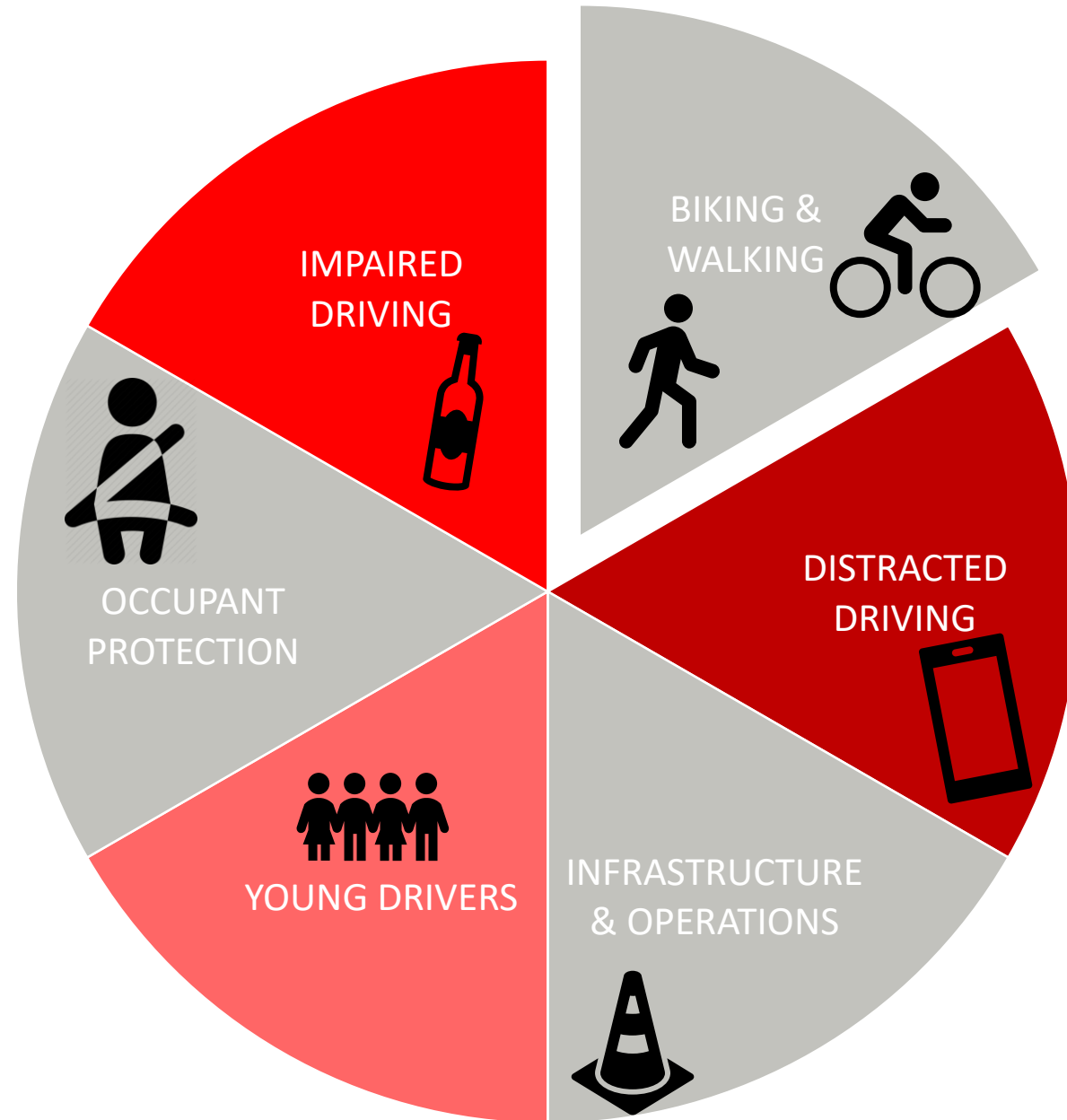


The  
Louisiana  
Approach

**The  
Louisiana  
Success  
Story**

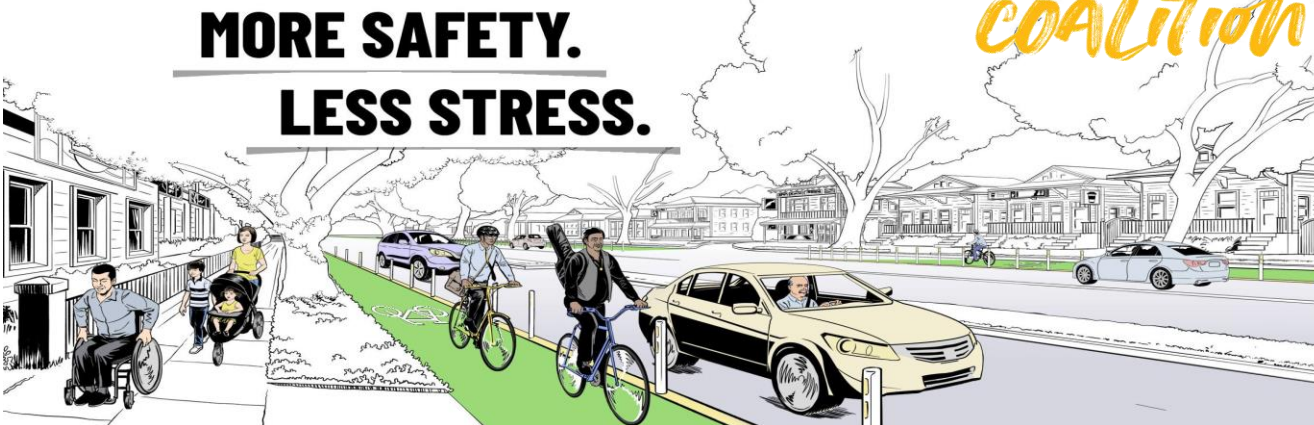
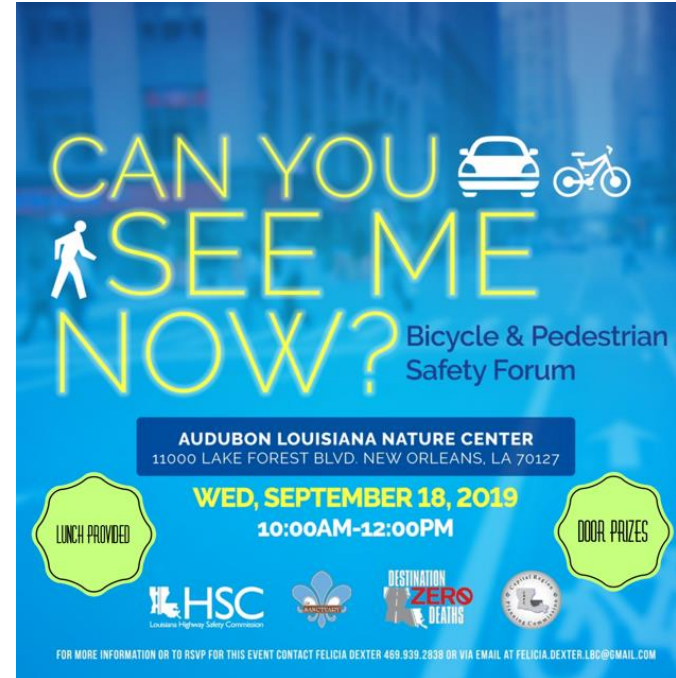


# Emphasis Areas





# Changing the Culture





— BE A —

# SMART PEDESTRIAN

It's the Law.

**CROSS AT INTERSECTIONS AND CROSSWALKS**  
Crossing at crosswalks makes you more visible and drivers must stop for you. (R.S. 32:212 (A))

**ALL INTERSECTIONS ARE CROSSWALKS**  
Crosswalks exist at all intersections, even if they are not marked. (R.S. 32:1(B))

**USE CAUTION BEFORE ENTERING THE CROSSWALK**  
Don't begin crossing if a car is too close to safely stop. (R.S. 32:212(B))

**FOLLOW TRAFFIC SIGNALS**  
Pedestrians must obey pedestrian signals or traffic signals. (R.S. 32:233, R.S. 32:232)

**YIELD TO VEHICLES WHEN NOT AT A CROSSWALK**  
If you're crossing at a location other than a marked or unmarked crosswalk, yield to vehicles. (R.S. 32:213)

— BE A —

# FRIENDLY MOTORIST

It's the Law.

**STOP FOR PEDESTRIANS IN CROSSWALKS**  
Drivers must stop for pedestrians in marked and unmarked crosswalks. (Louisiana Revised Statutes 32:212(A))

**ALL INTERSECTIONS ARE CROSSWALKS**  
Crosswalks exist at all intersections, even if they are not marked. (R.S. 32:1(B))

**KEEP THE CROSSWALK CLEAR**  
Don't block the crosswalk when you stop for a red light or stop sign. (R.S. 32:123 and R.S. 32:232(3a))

**DON'T PASS OTHER CARS STOPPED AT A CROSSWALK**  
Drivers are prohibited from passing vehicles stopped at a crosswalk. (R.S. 32:212(C))

**PEDESTRIANS HAVE THE RIGHT-OF-WAY ON SIDEWALKS**  
Stop for pedestrians on the sidewalk when entering alleys and driveways. (R.S. 32:219)

## FOR PEDESTRIANS:

**FOLLOW TRAFFIC SIGNALS**  
When walking, obey pedestrian signals or traffic signals.<sup>1</sup>

**CROSS AT INTERSECTIONS AND CROSSWALKS**  
Crossing at crosswalks makes you more visible, and legally, drivers must stop for you at crosswalks.<sup>2</sup>

**ALL INTERSECTIONS ARE CROSSWALKS**  
Crosswalks exist at all intersections, even if they are not marked.<sup>3</sup>

**USE CAUTION BEFORE ENTERING THE CROSSWALK**  
Don't begin crossing if a car is too close to safely stop.<sup>2</sup>

**YIELD TO VEHICLES WHEN NOT AT A CROSSWALK**  
If you are crossing at a location other than a marked or unmarked crosswalk, yield to

In 2017, 35% of pedestrian fatalities statewide, the largest percentage, occurred from 9 to 11:59 p.m. Remember to wear bright or reflective clothing when walking at night!

Photo by Infogramation of New Orleans and licensed under the Creative Commons Attribution-Share Alike 4.0 International license.

1. LRS 32:232, LRS 32:233 2. LRS 32:212 3. LRS 32:1(B)

## FOR DRIVERS:

**STOP FOR PEDESTRIANS**  
STOP for people walking in marked and unmarked crosswalks.<sup>2</sup>

**KEEP THE CROSSWALK CLEAR**  
Don't block the crosswalk when you stop for a red light or stop sign.<sup>3</sup>

**DON'T PASS OTHER CARS STOPPED AT A CROSSWALK**  
At a crosswalk, do not pass a stopped vehicle in an adjacent travel lane.<sup>2</sup>

**EXERCISE DUE CARE**  
Drivers shall exercise due care to avoid colliding with any pedestrian upon any roadway.<sup>5</sup>

**EYES ON THE ROAD**  
Don't text or engage in social media while driving; make sure calls are hands-free.<sup>7</sup>

In 2018, 164 pedestrians were killed in traffic crashes on public roads in Louisiana.

This is a 43% increase from 2017 and the deadliest year for pedestrians in Louisiana on record.

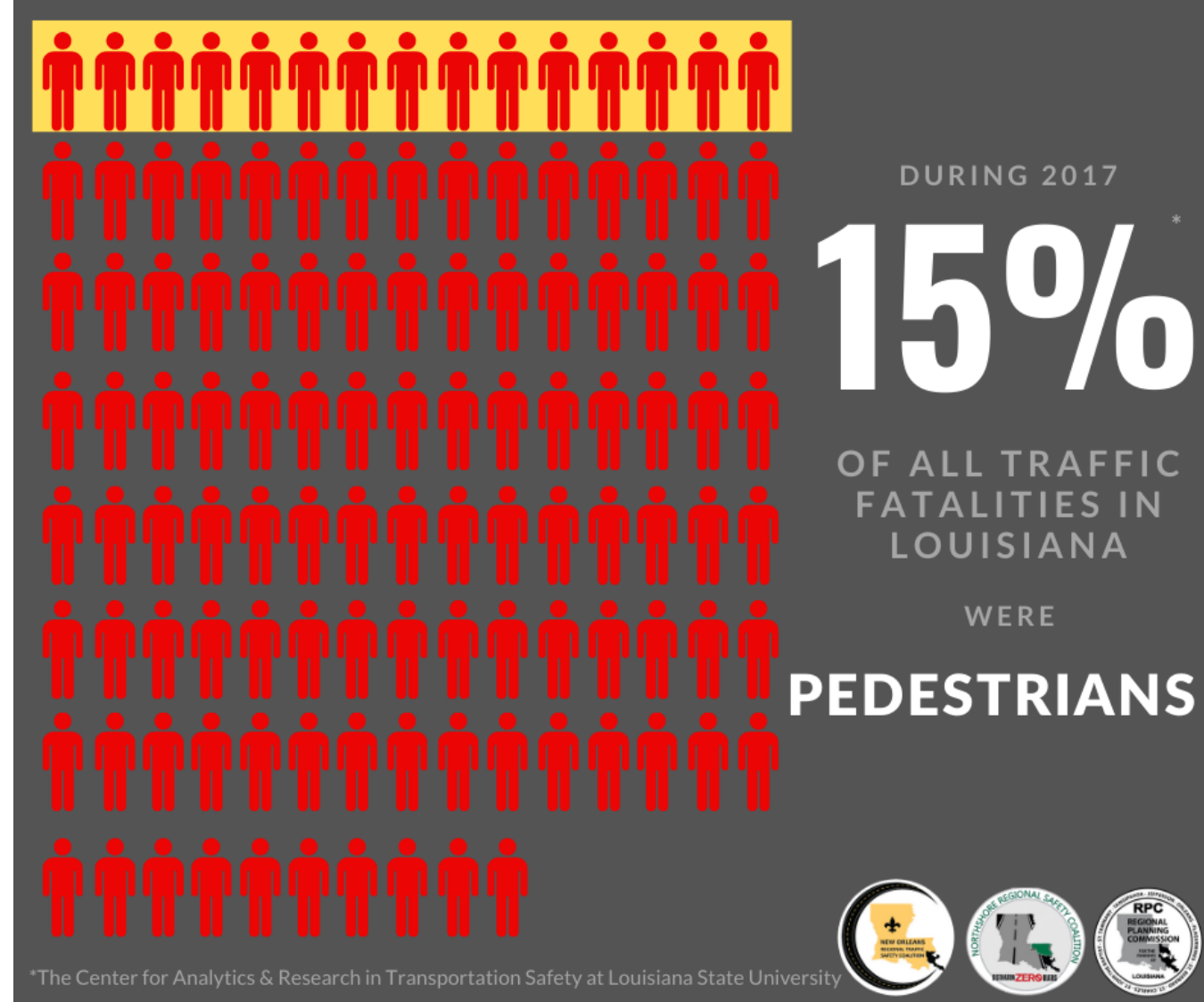
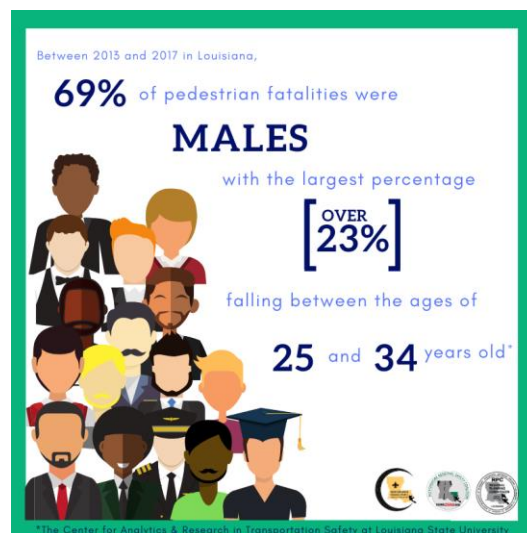
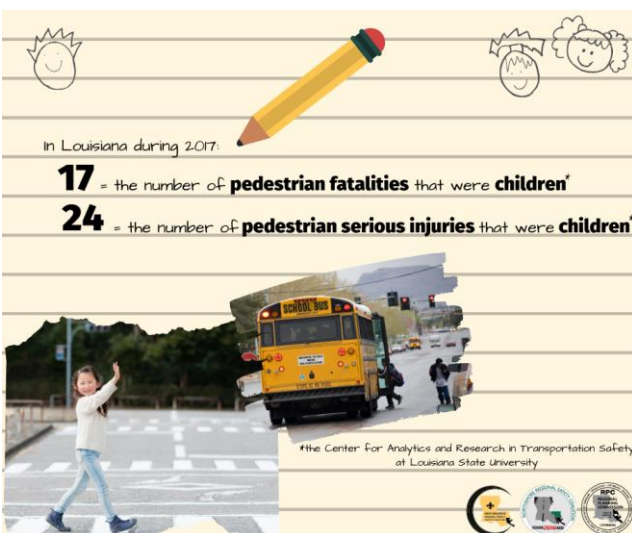
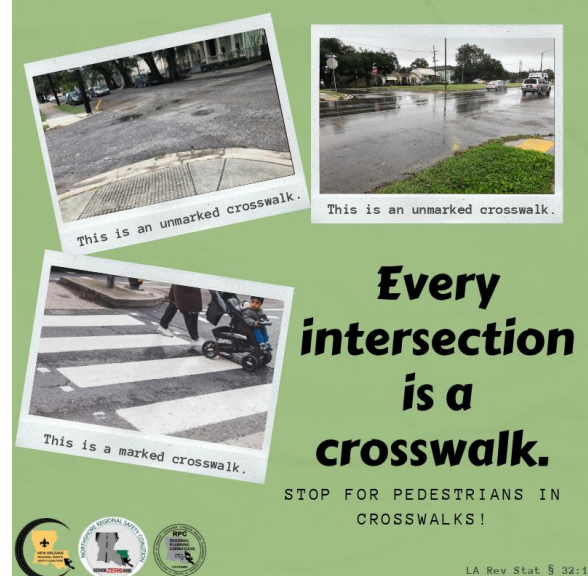
**Louisiana SHSP Regional Coalitions**

- Northwest Louisiana Transportation Safety Coalition
- North Central Louisiana Highway Safety Partnership
- Central Louisiana Highway Safety Coalition
- Central Region Transportation Safety Coalition
- North Shore Regional Safety Coalition
- Southwest Louisiana Regional Safety Coalition
- South Central Regional Safety Coalition
- South Louisiana Regional Safety Coalition

www.dotd.la.gov  
www.destinationzerodeaths.com

# WALK SAFELY, LOUISIANA





Social Media



# Pedestrian Safety Videos

---



## Pedestrian Safety Saves Lives





**1. Enter the titles for the report:**

Title 1 :

Title 2 :

Title 3 :

☐ For Crash Years 1990-2007 - use Milepoint

☒ For Crash Years 2008-2020 - use Milepoint

**2. Enter the beginning and ending dates:**

From year  month  day  to year  month  day

**3. Select the geographic area to include (either route, control-section, parish, district, or statewide)**

☒ Route: Type  Num  Byp  Milepoint From  To

☐ Control-Section:  Logmile From  To

☐ Parish:  City:

☐ District:

☐ Troop:

☐ Include Local Road crashes?

☐ Within 150 feet of intersection. Parish:  ID:

☐ Within  feet ☐ miles of lat, long  Find in:

**4. Select the type of report (detail or summary):**

☒ Detail ☐ Summary by:

**5. Choose other selection criteria:**

Intersection (from report): ☒ All ☐ Yes ☐ No

Intersection Related (150 ft radius): ☒ All ☐ Yes ☐ No

Lighting: ☒ All ☐ Daylight ☐ Dark ☐ Dusk ☐ Dawn ☐ Unknown

Day of Week :

Pedestrian : ☒ All ☐ Yes ☐ No

Alcohol : ☒ All ☐ Yes ☐ No

Work Zone: ☒ All ☐ Yes ☐ No

Direction : ☒ All ☐ N ☐ S ☐ E ☐ W

Accident Class : ☒ All ☐ Fatal ☐ Injury ☐ PDO

Injury Severity: ☒ All ☐ Fatal ☐ Severe ☐ Moderate ☐ Complaint ☐ None

Manner of Collision :

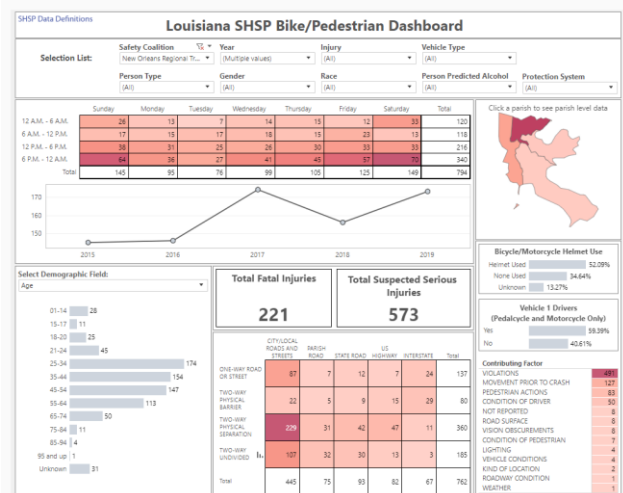
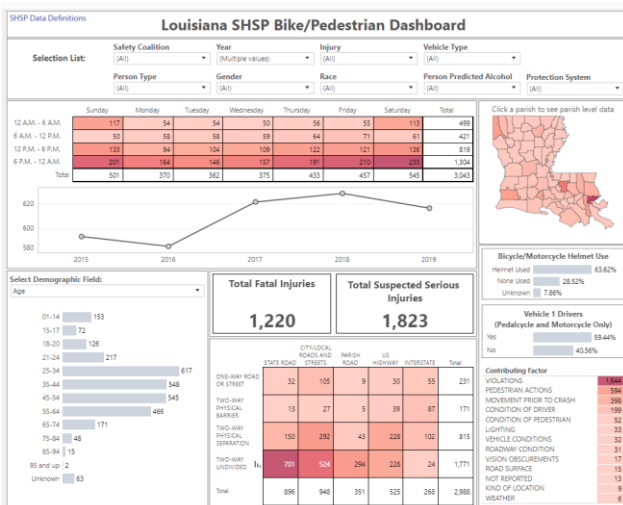
# Crash Data

- Crash data is the foundation of safety analysis
- Generated by a responding officer to a crash
  - Data collected is subjective
- Data sent to CARTS at LSU to be cleaned
- Crash data is stored in data warehouse



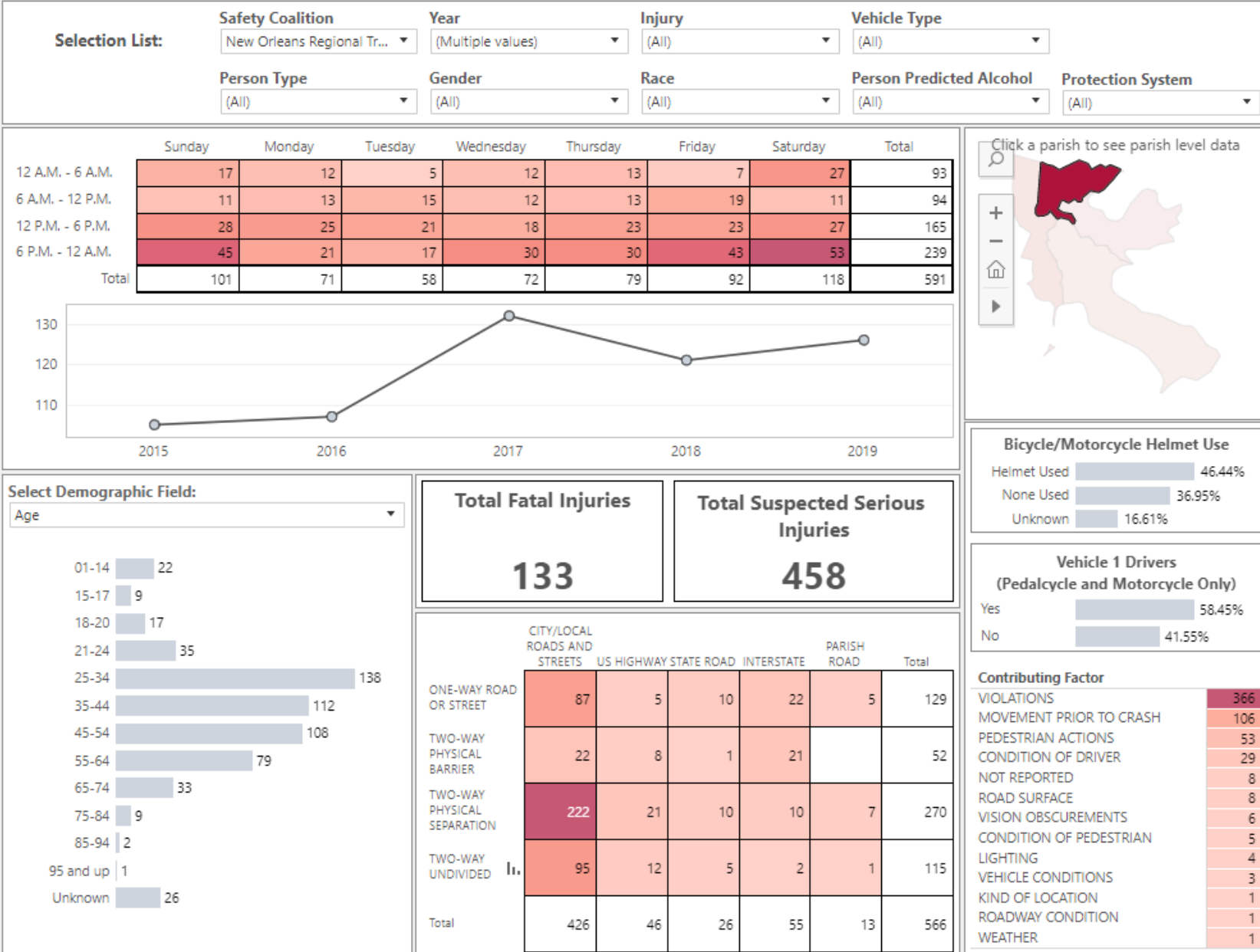
# Data Dashboards

<http://datareports.lsu.edu/shsps.aspx>

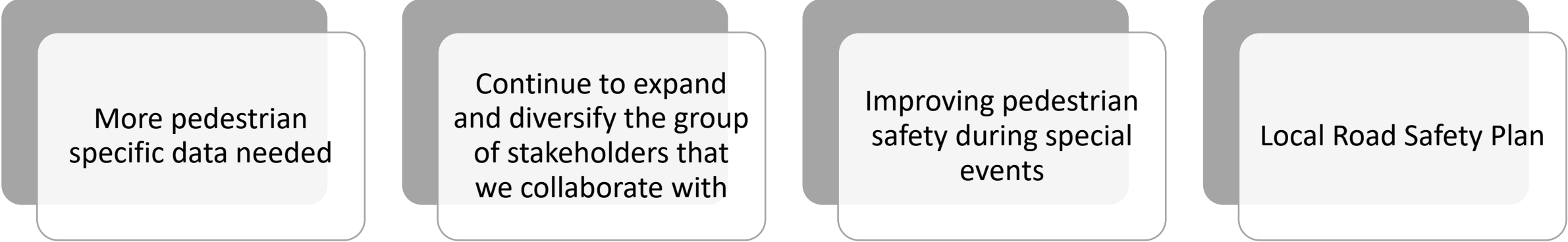


## SHSP Data Definitions

## Louisiana SHSP Bike/Pedestrian Dashboard



# The Future of Walking in the Big Easy



More pedestrian  
specific data needed

Continue to expand  
and diversify the group  
of stakeholders that  
we collaborate with

Improving pedestrian  
safety during special  
events

Local Road Safety Plan



# Thank You!

Elizabeth Morris, MPH  
New Orleans Regional Traffic Safety Coalition Coordinator  
Regional Planning Commission  
10 Veterans Blvd, New Orleans, LA 70124  
504-483-8505 | [emorris@norpc.org](mailto:emorris@norpc.org)

