

STEP

Safe Transportation for
Every Pedestrian



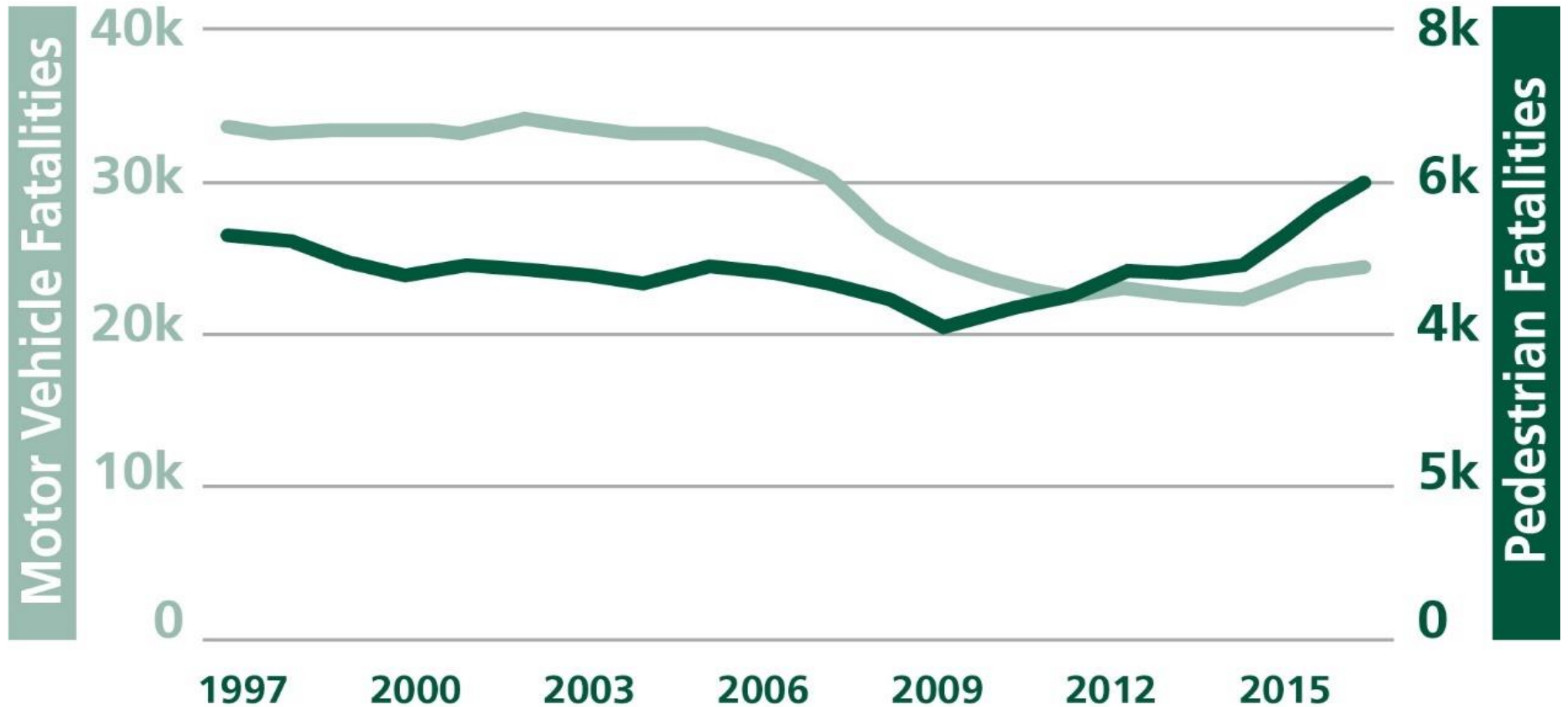
Pedestrian Safety at Uncontrolled Crossings

Elizabeth Hilton, P.E.
July 12, 2018



U.S. Department of Transportation
Federal Highway Administration

U.S. Pedestrian Fatalities*



*Data from FARS, NHTSA; Graphic from Systemic Pedestrian Safety Analysis, Final Guidebook



72% of pedestrian fatalities occur at non-intersection locations

The Spectacular Six: STEP Countermeasures



Crosswalk Visibility Enhancements



Raised Crosswalk



Pedestrian Refuge Island



Pedestrian Hybrid Beacon (PHB)



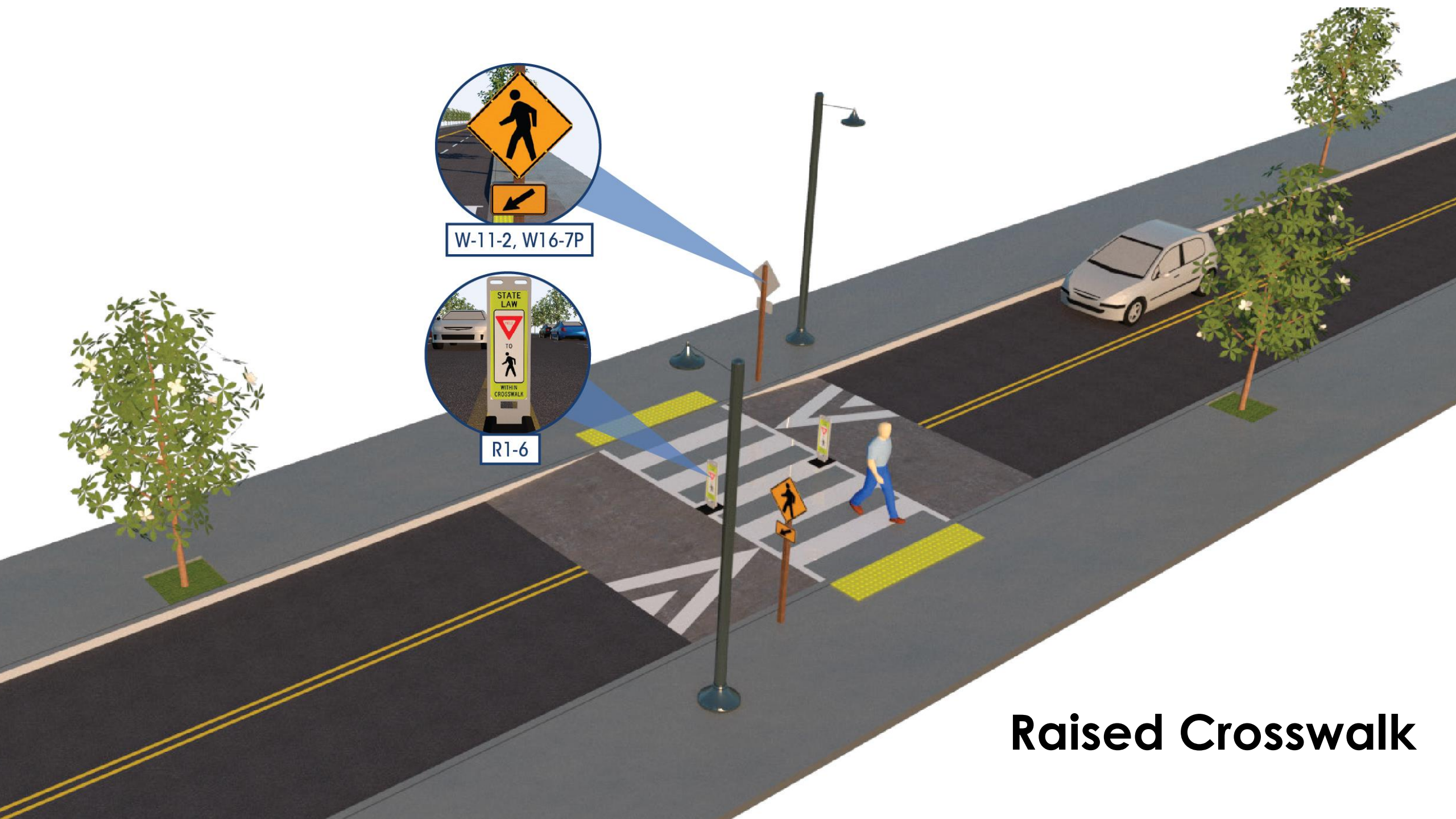
Road Diet



Rectangular Rapid-Flashing Beacon

Crosswalk Visibility Enhancements





W-11-2, W16-7P

R1-6

Raised Crosswalk

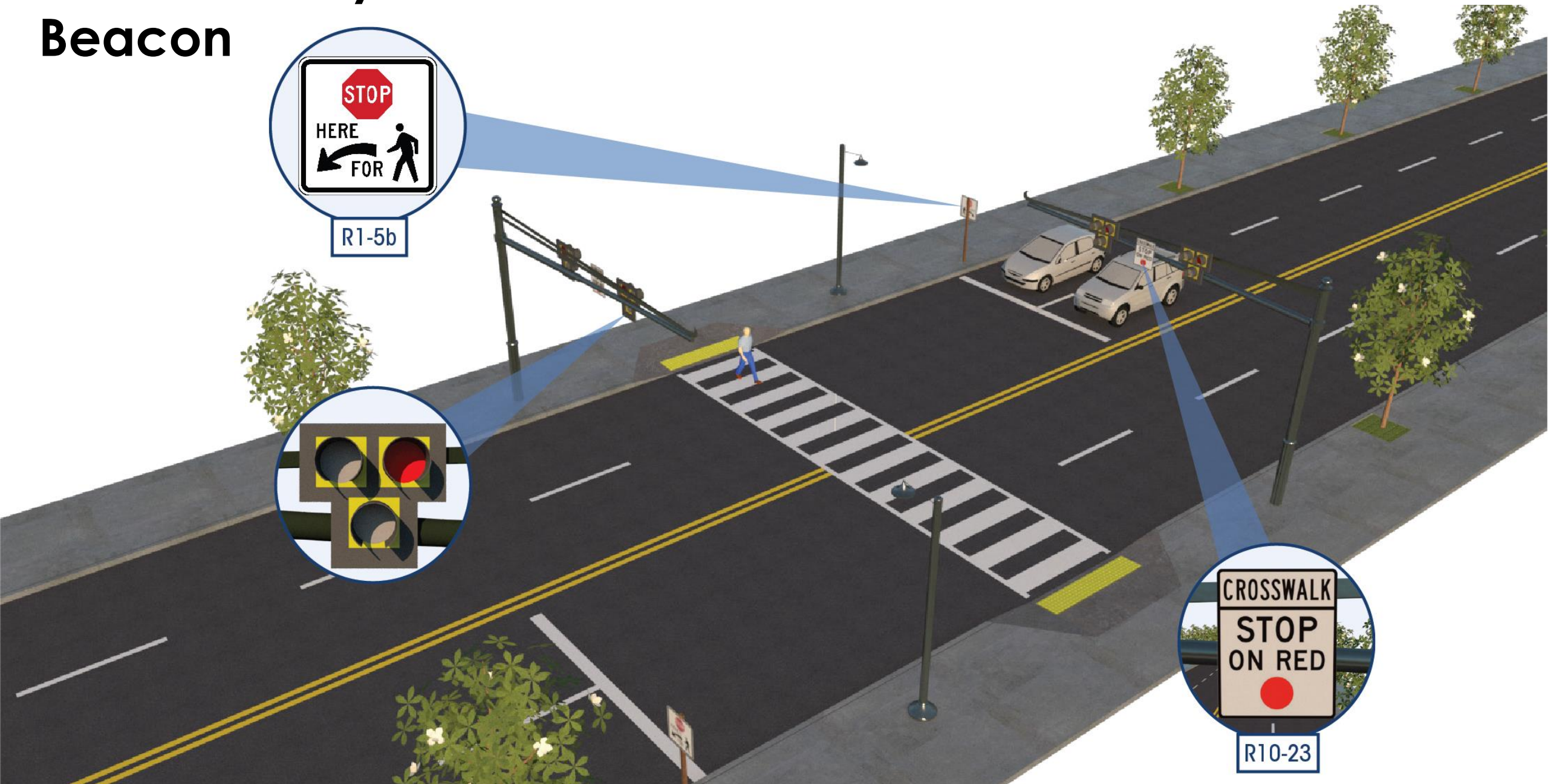


R1-6

W-11-2, W16-7P

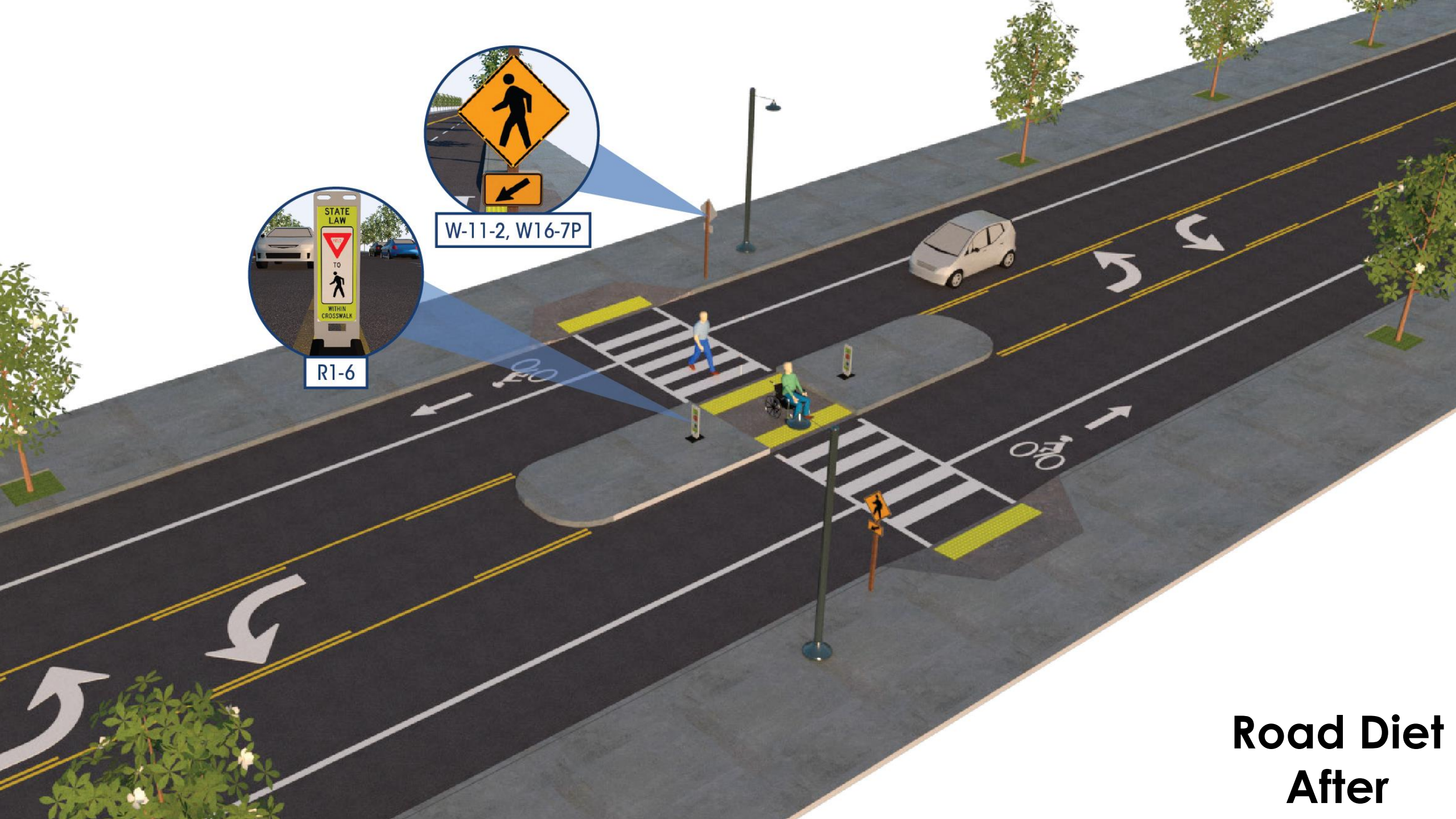
Refuge Island

Pedestrian Hybrid Beacon





Road Diet – Before



W-11-2, W16-7P

R1-6

Road Diet
After

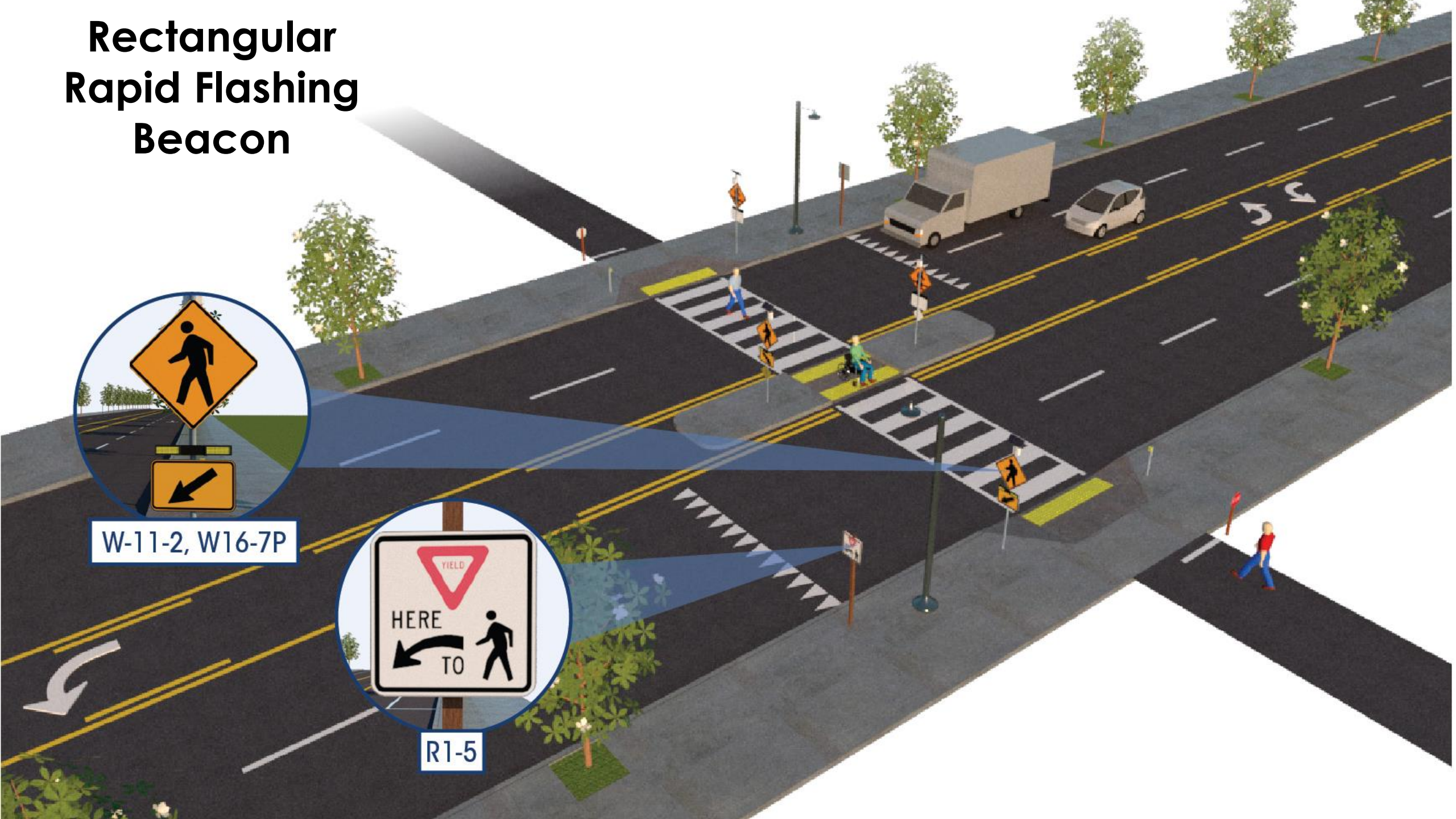
Rectangular Rapid Flashing Beacon



W-11-2, W16-7P



R1-5

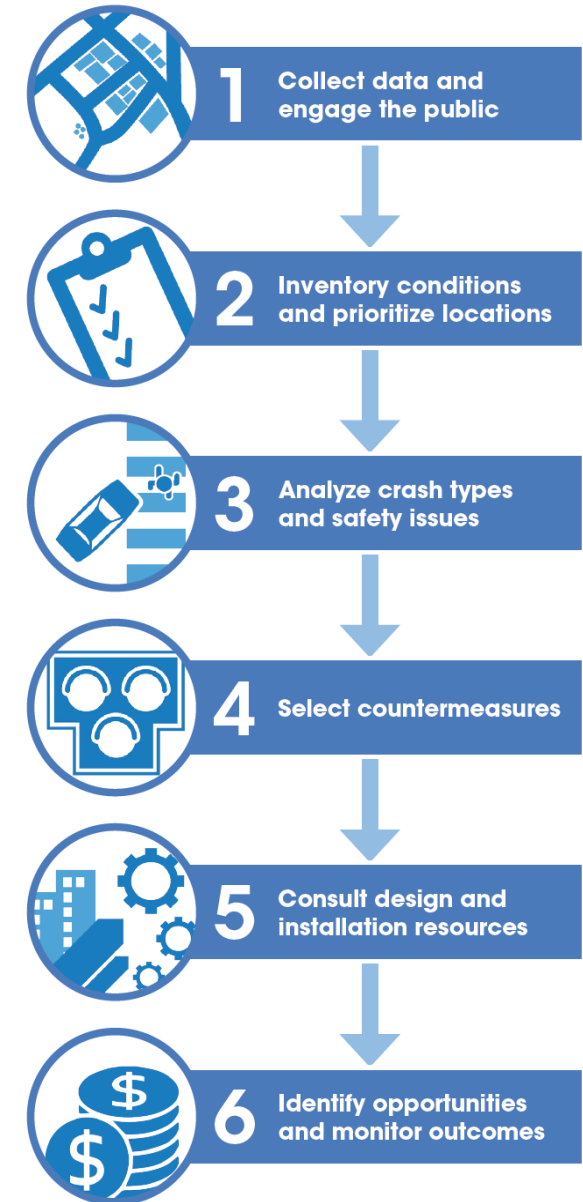


Guide for Improving Pedestrian Safety at Uncontrolled Crossing Locations

Follows a 6-step process

Guides the selection of countermeasures to improve pedestrian safety

Supported by a “Field Guide for Selecting Countermeasures at Uncontrolled Pedestrian Crossing Locations”

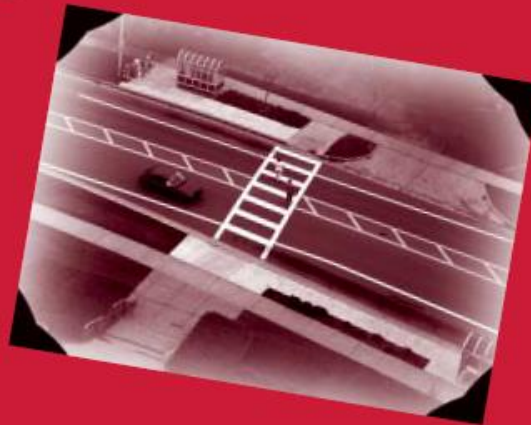


Safety Effects of Marked Versus Unmarked Crosswalks at Uncontrolled Locations

Final Report and Recommended Guidelines

FHWA PUBLICATION NUMBER: HRT-04-100

SEPTEMBER 2005



U.S. Department of Transportation
Federal Highway Administration

Research, Development, and Technology
Turner-Fairbank Highway Research Center
6300 Georgetown Pike
McLean, VA 22101-2296



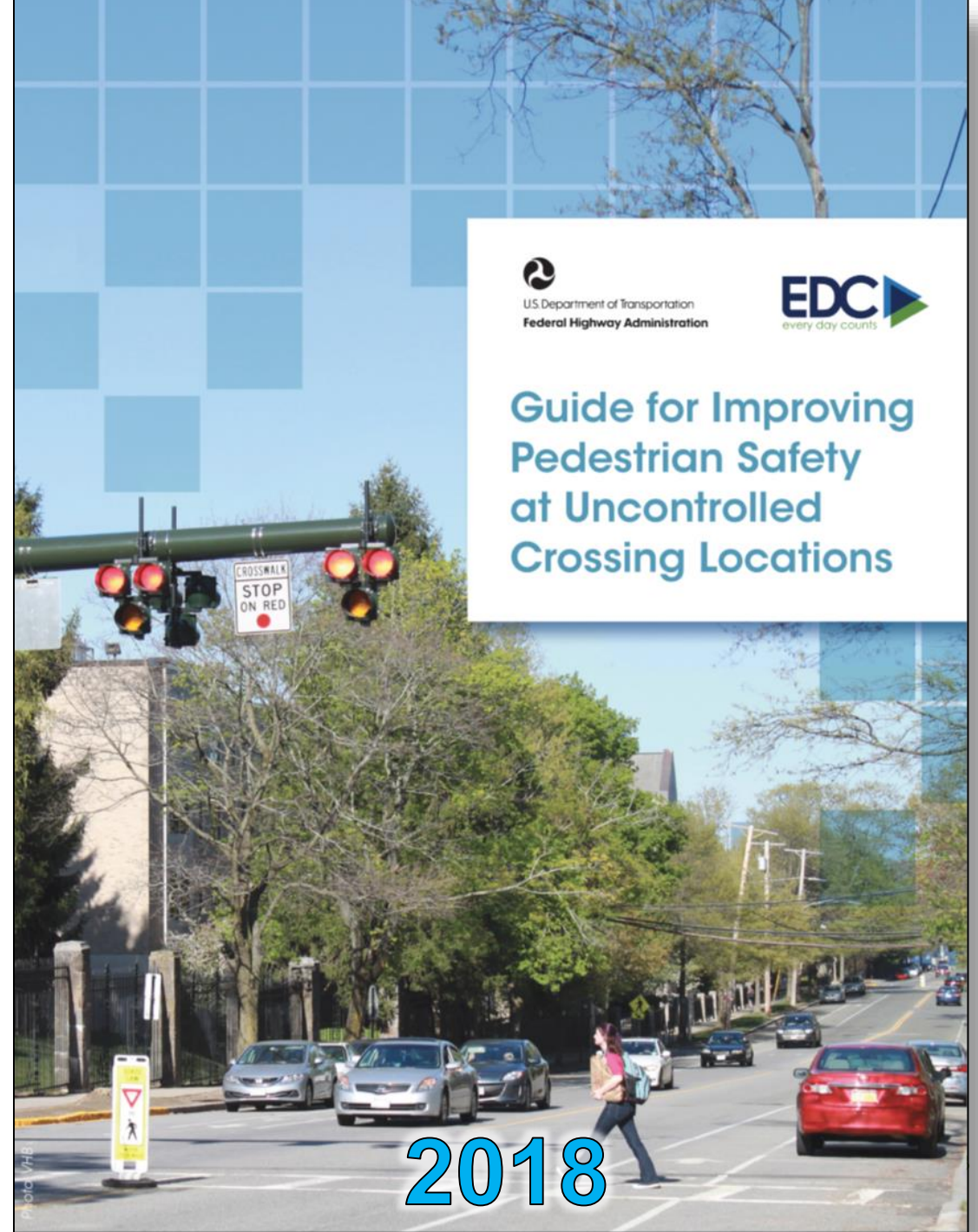
2005



U.S. Department of Transportation
Federal Highway Administration



Guide for Improving Pedestrian Safety at Uncontrolled Crossing Locations





U.S. Department of Transportation
Federal Highway Administration



FHWA EVERY DAY COUNTS 4 / STEP

For Additional Information Contact:

https://www.fhwa.dot.gov/innovation/everydaycounts/edc_4/step.cfm

Becky Crowe
FHWA Office of Safety
(804) 775-3381
Rebecca.Crowe@dot.gov

Peter Eun
FHWA Resource Center
(360) 753-9551
Peter.Eun@dot.gov